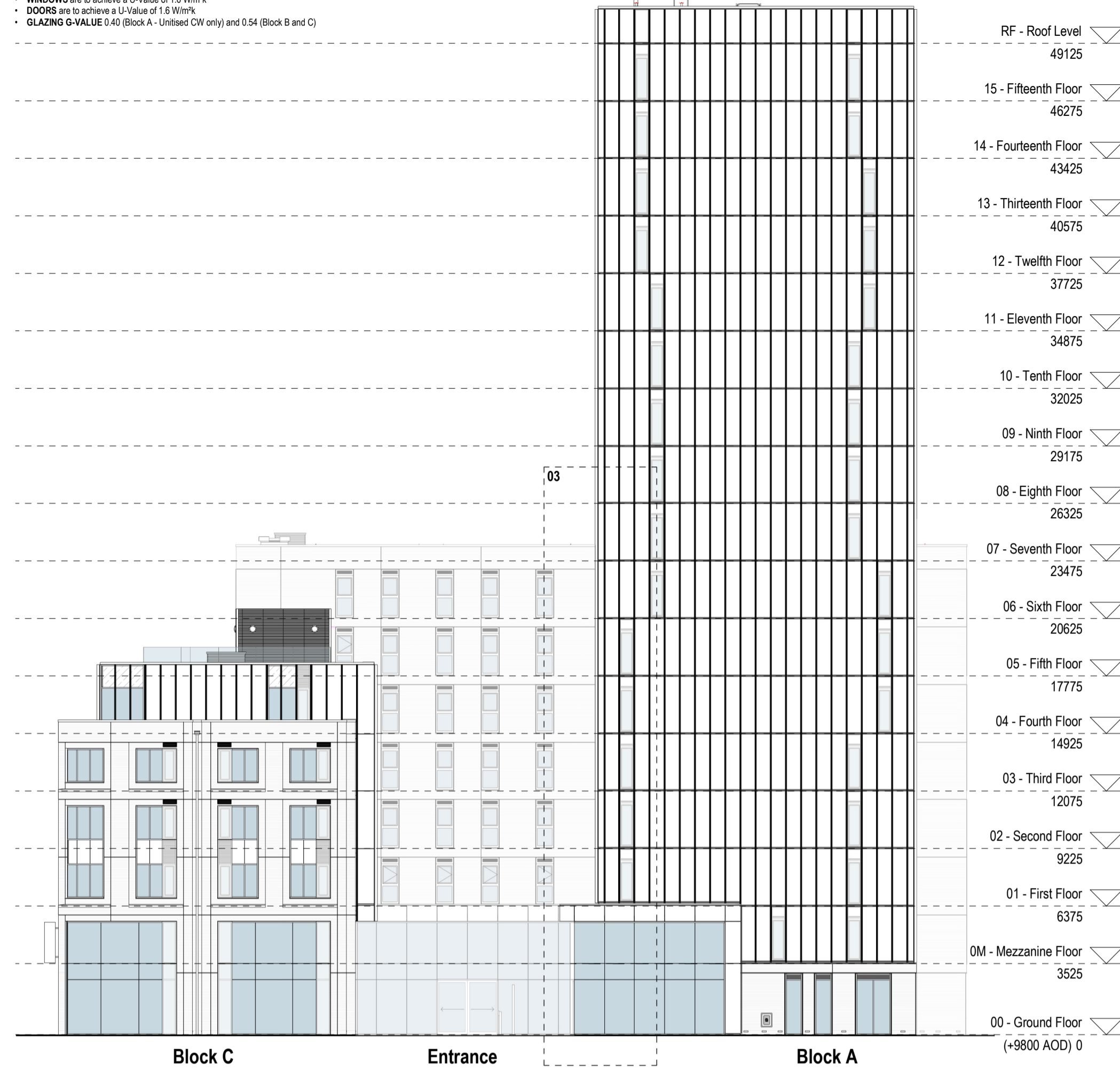
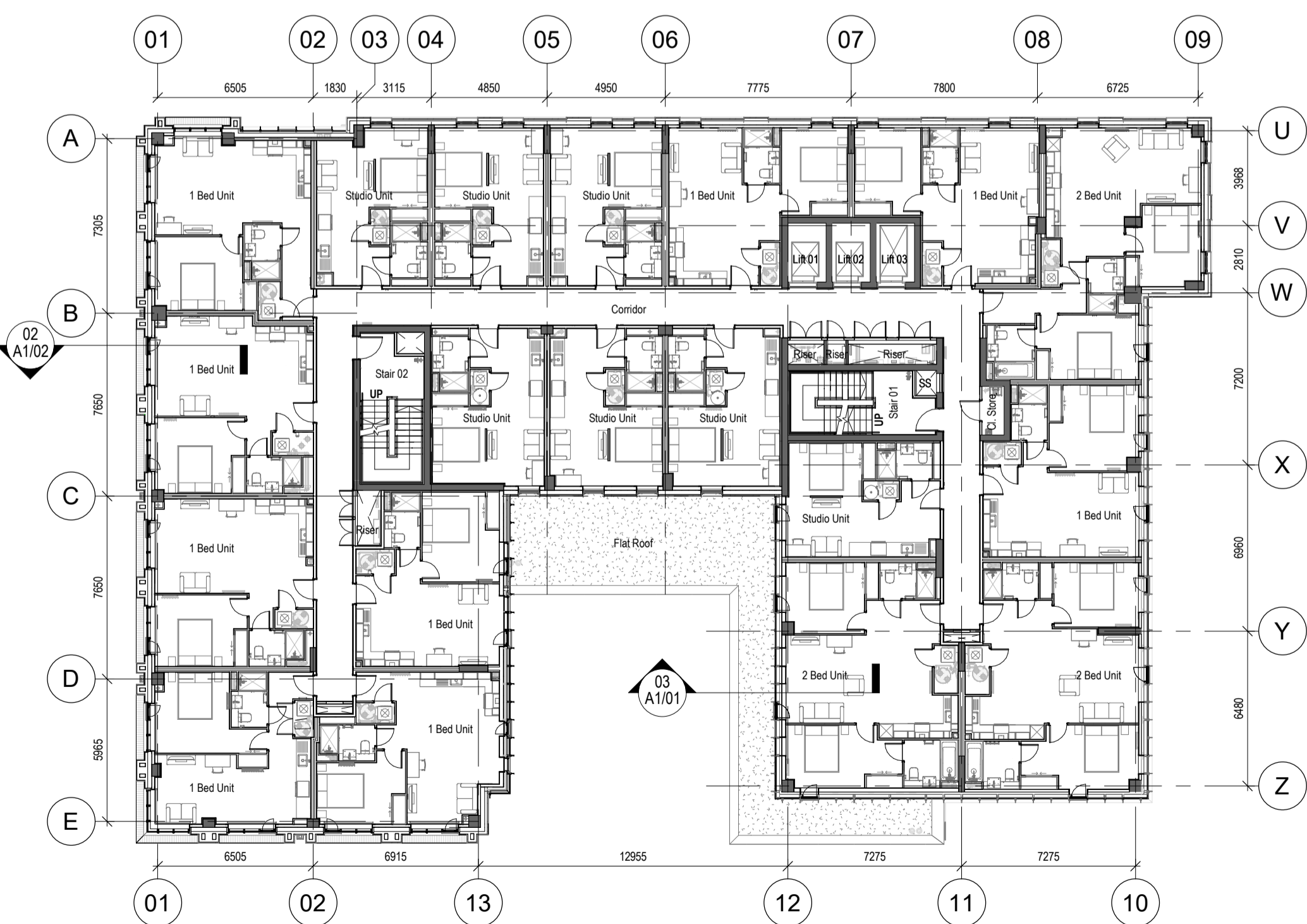


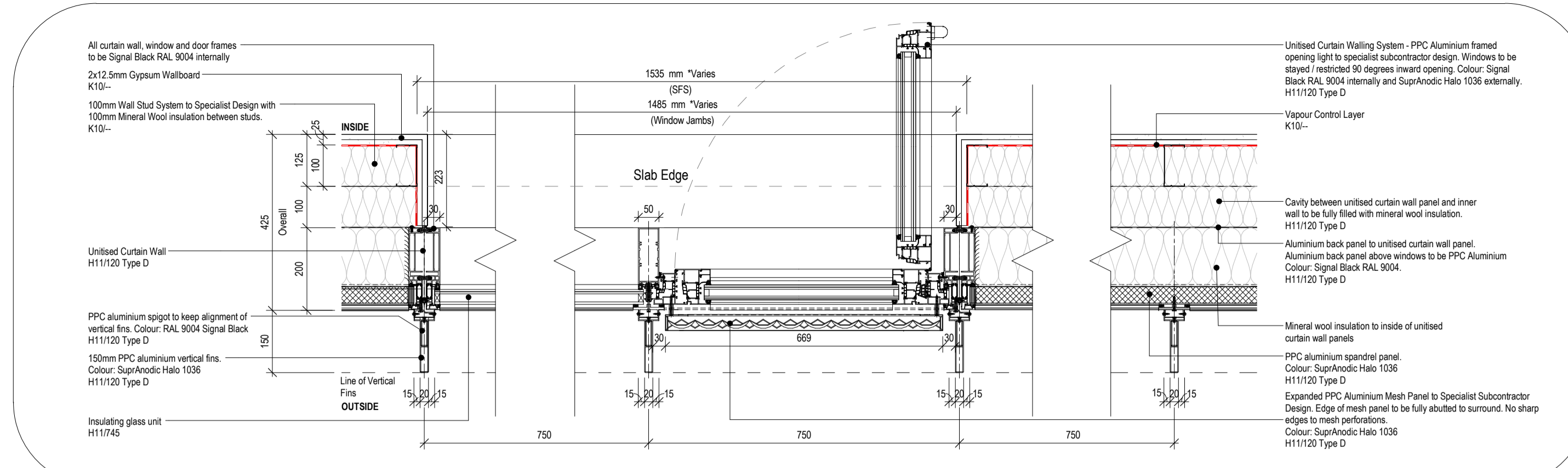
- THE REQUIRED U-VALUES ARE SET OUT BELOW:**
- **EXTERNAL WALLS** are to achieve a U-Value of 0.21 W/m²K
 - **ROOFS** are to achieve a U-Value of 0.13 W/m²K (overall weighted U-Value - 0.15 W/m²K)
 - **ROOF to Roof Terrace** to achieve a U-Value of 0.20 W/m²K (overall weighted U-Value - 0.15 W/m²K)
 - **ROOF to Canopy** to achieve a U-Value of 0.14 W/m²K (overall weighted U-Value - 0.15 W/m²K)
 - **FLOOR** is to achieve a U-Value of 0.18 W/m²K
 - **WINDOWS** are to achieve a U-Value of 1.5 W/m²K
 - **DOORS** are to achieve a U-Value of 1.8 W/m²K
 - **GLAZING G-VALUE** 0.40 (Block A - Uninsulated CW only) and 0.54 (Block B and C)



01 Wesley Lane Elevation (SE)
1 : 200



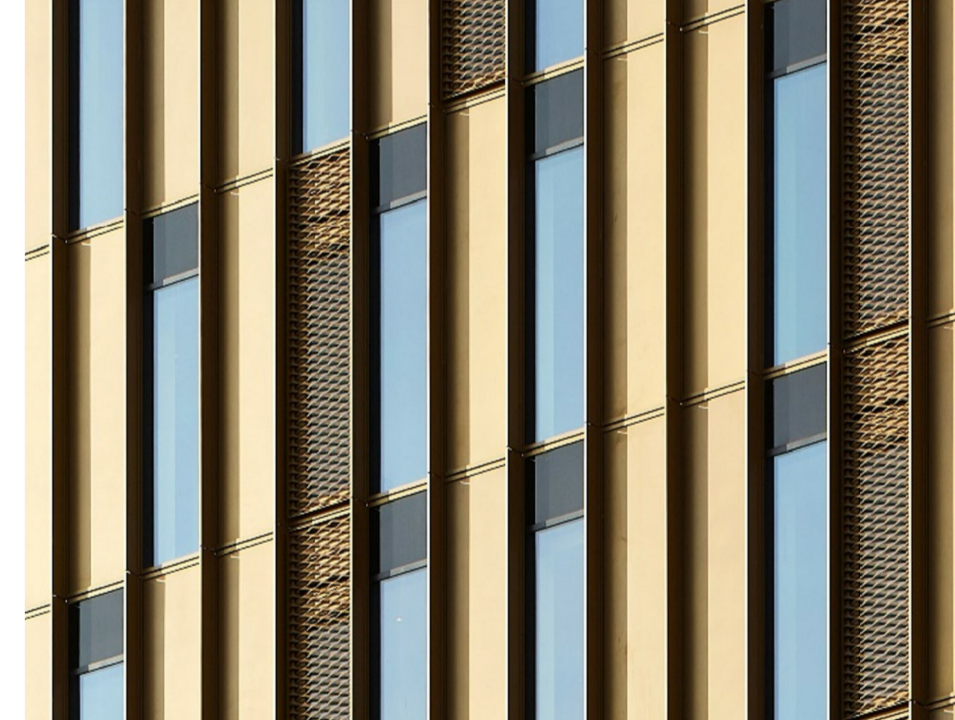
02 Typical Floor Plan
1 : 200



04 Unitted Curtain Wall - Window Jamb Plan Detail
1 : 10



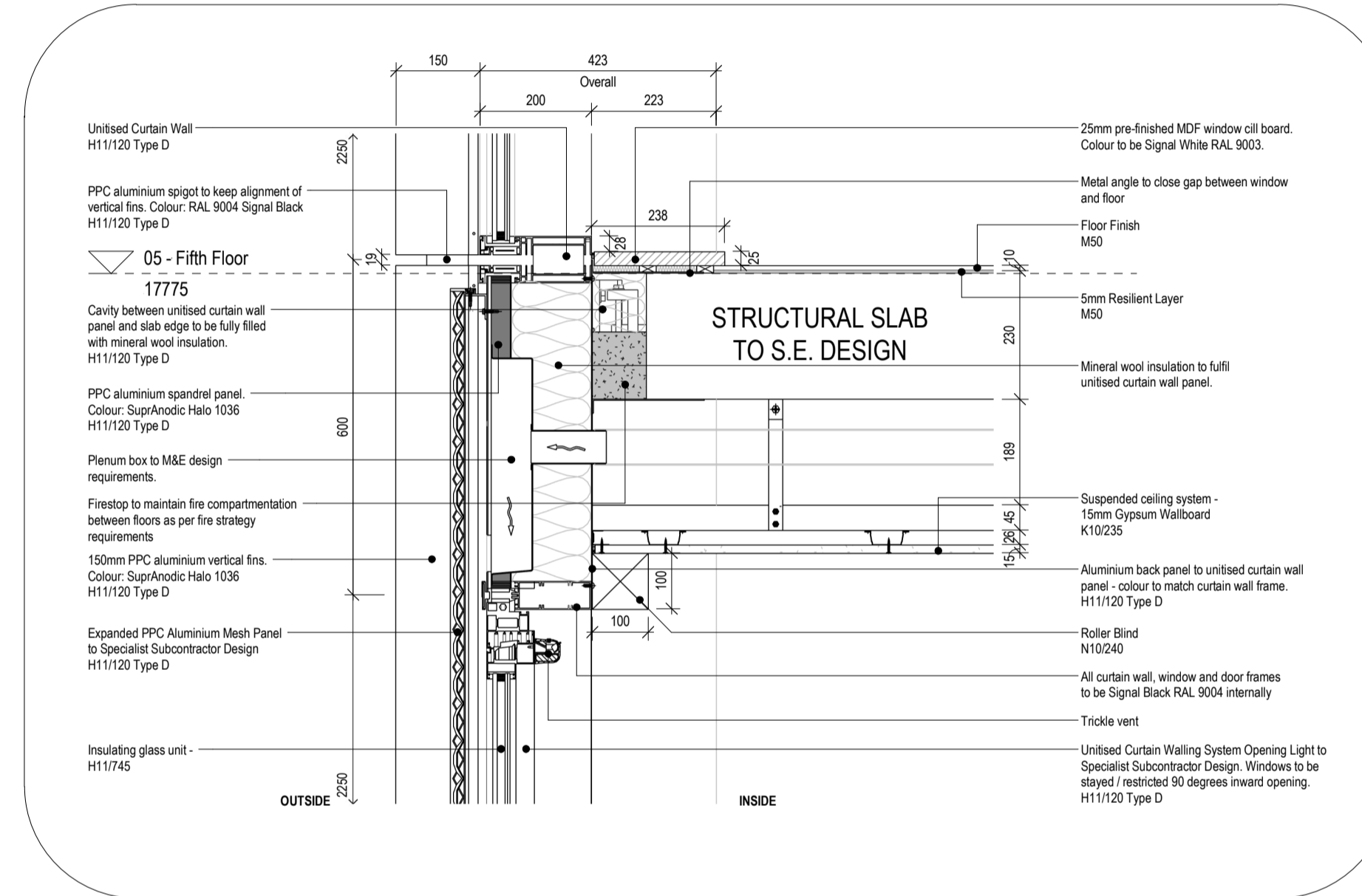
UNITISED CURTAIN WALLING UNDER CONSTRUCTION



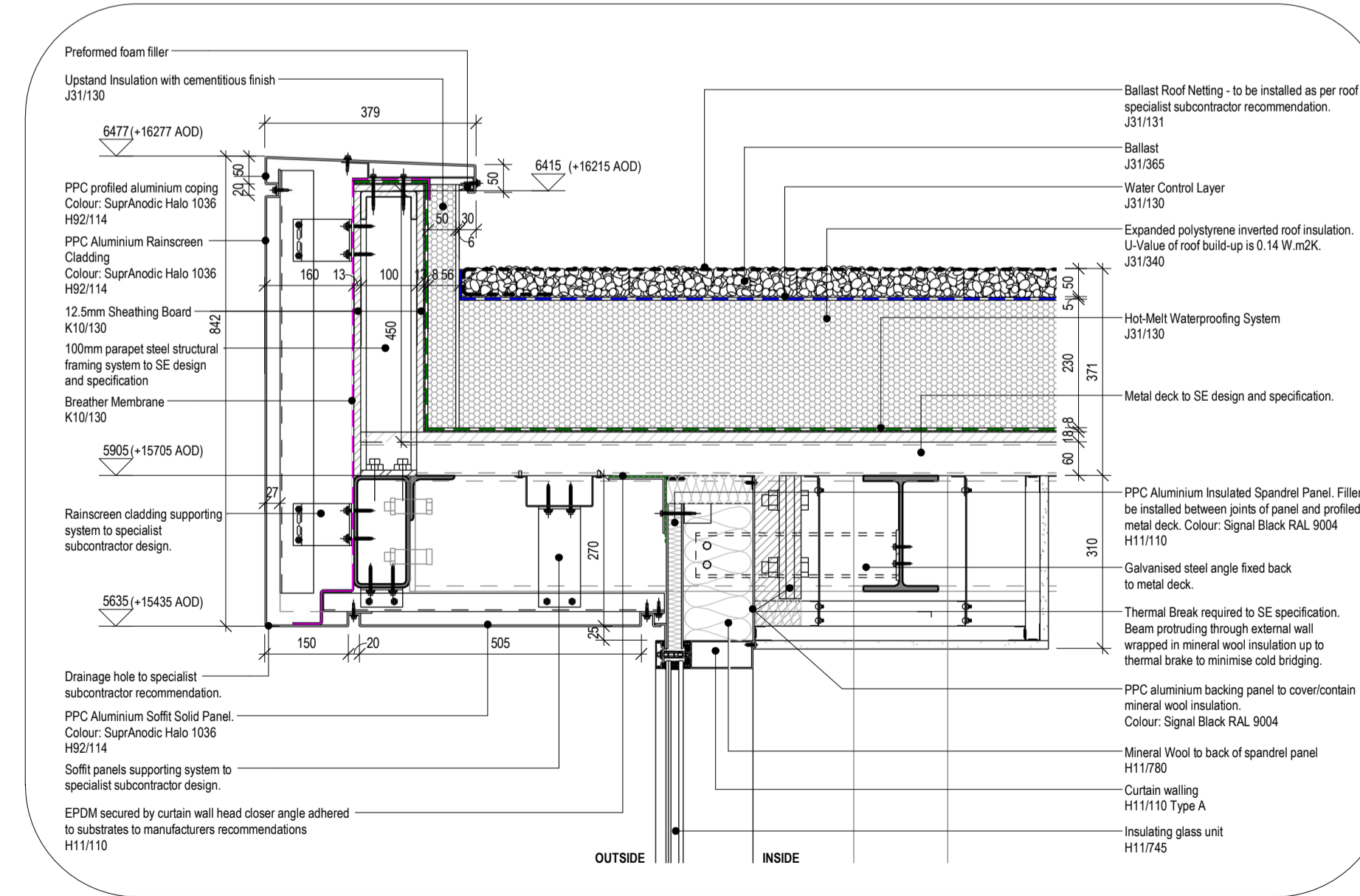
UNITISED CURTAIN WALLING COMPLETED



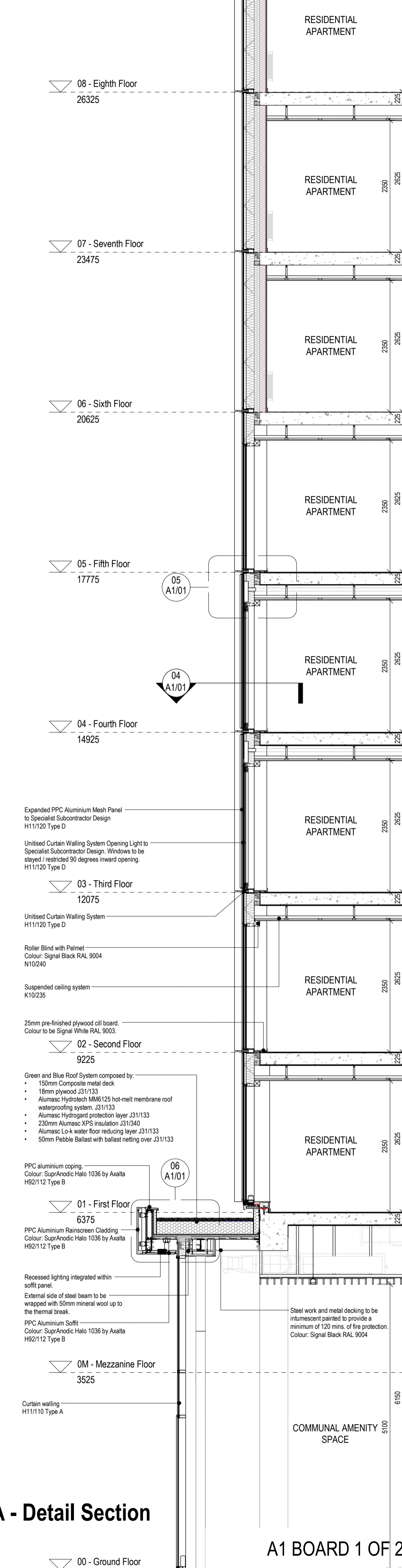
COURTYARD VIEW



05 Unitted Curtain Wall - Window Head & Cill Section Detail
1 : 10



06 Courtyard Canopy - Section Detail
1 : 10



03 Block A - Detail Section
1 : 50

