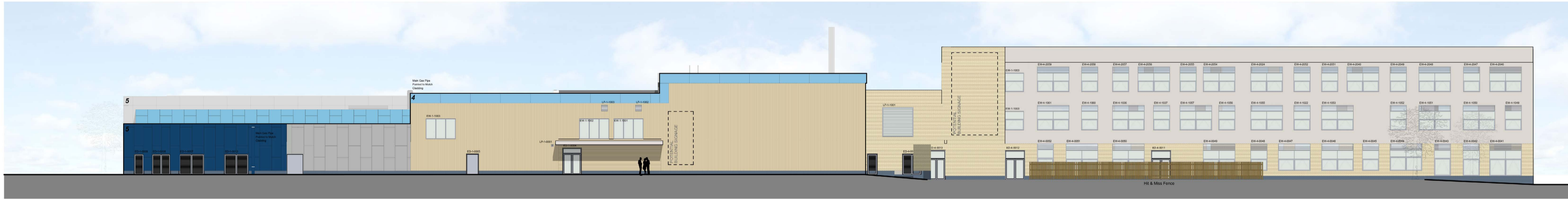




North Elevation
1:200



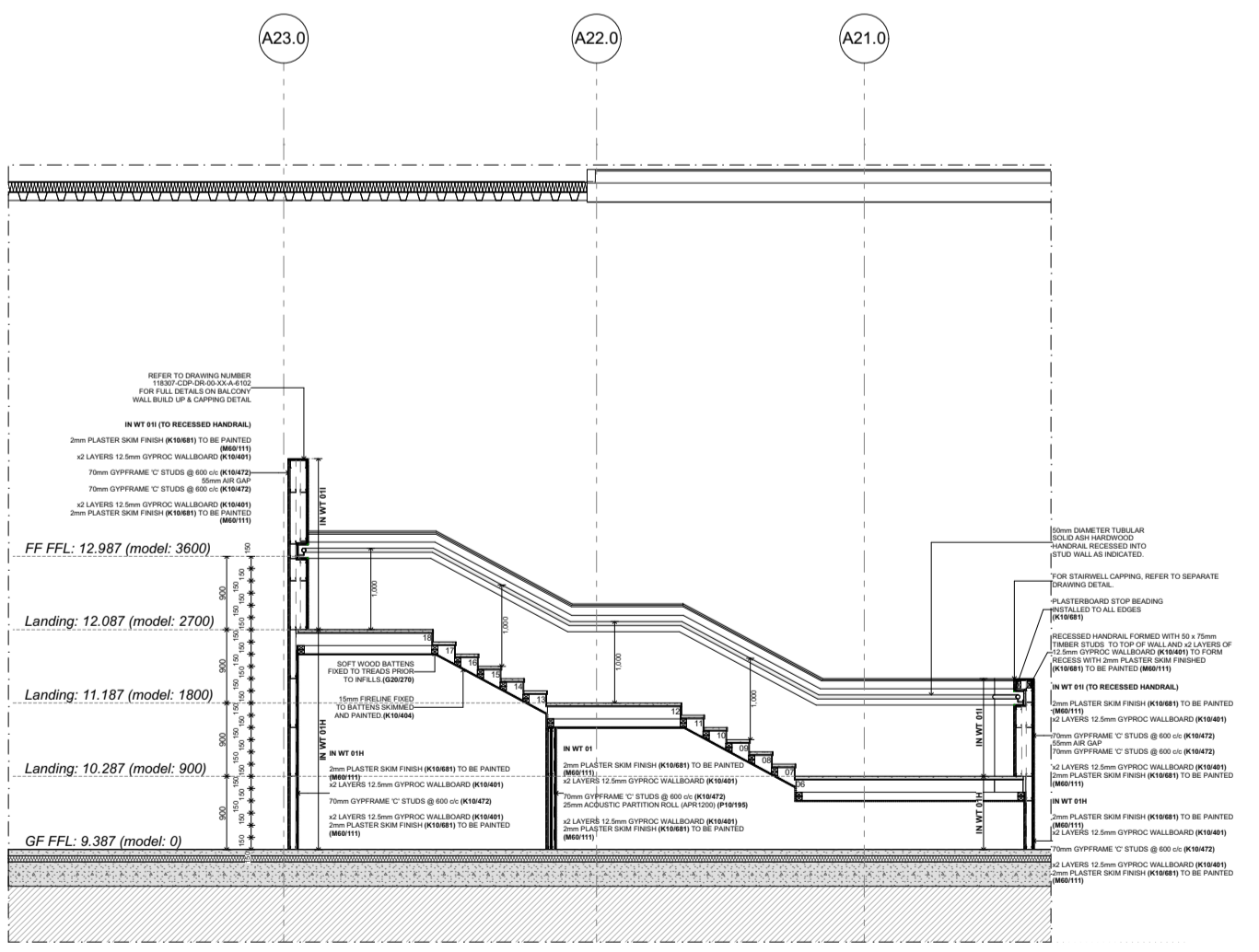
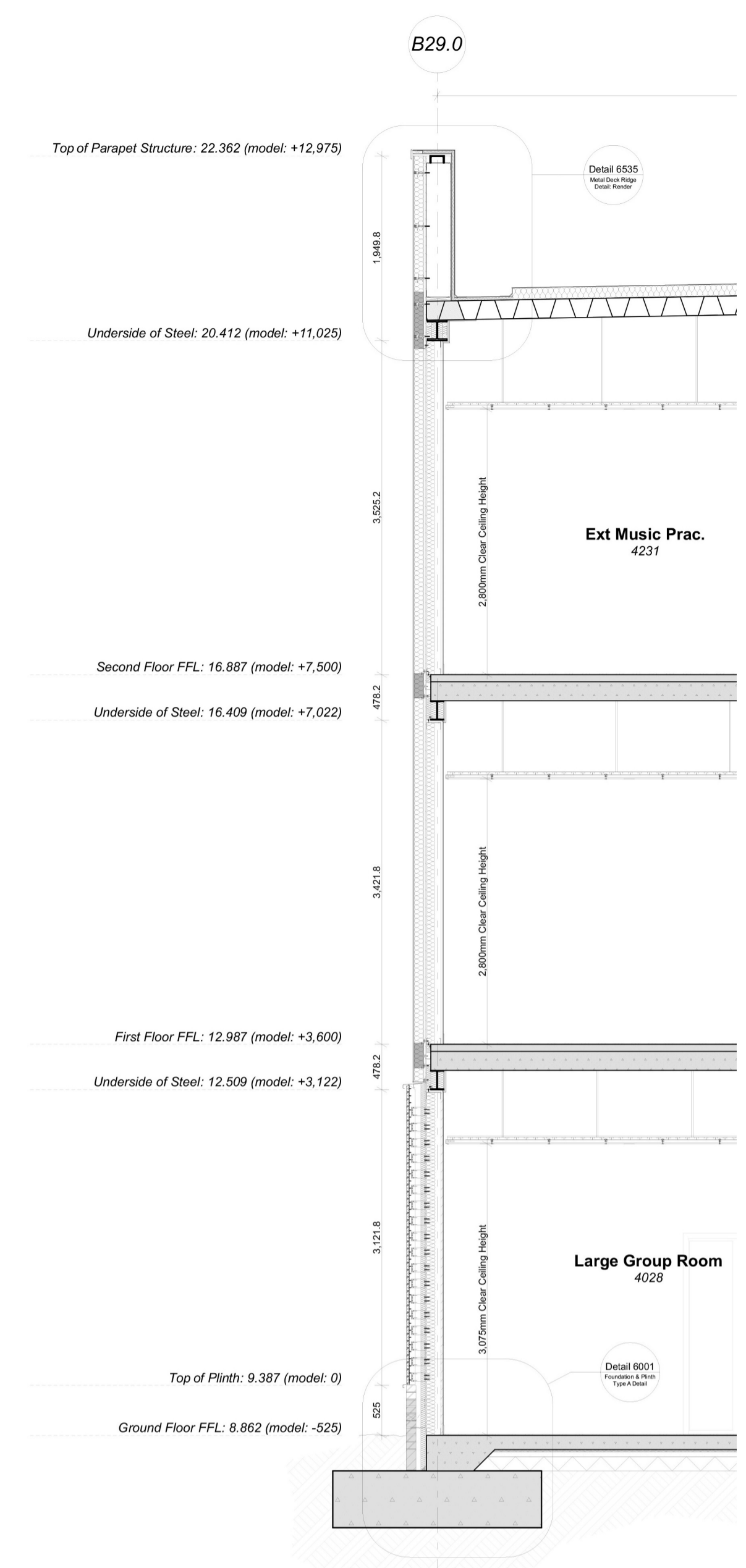
West Elevation
1:200



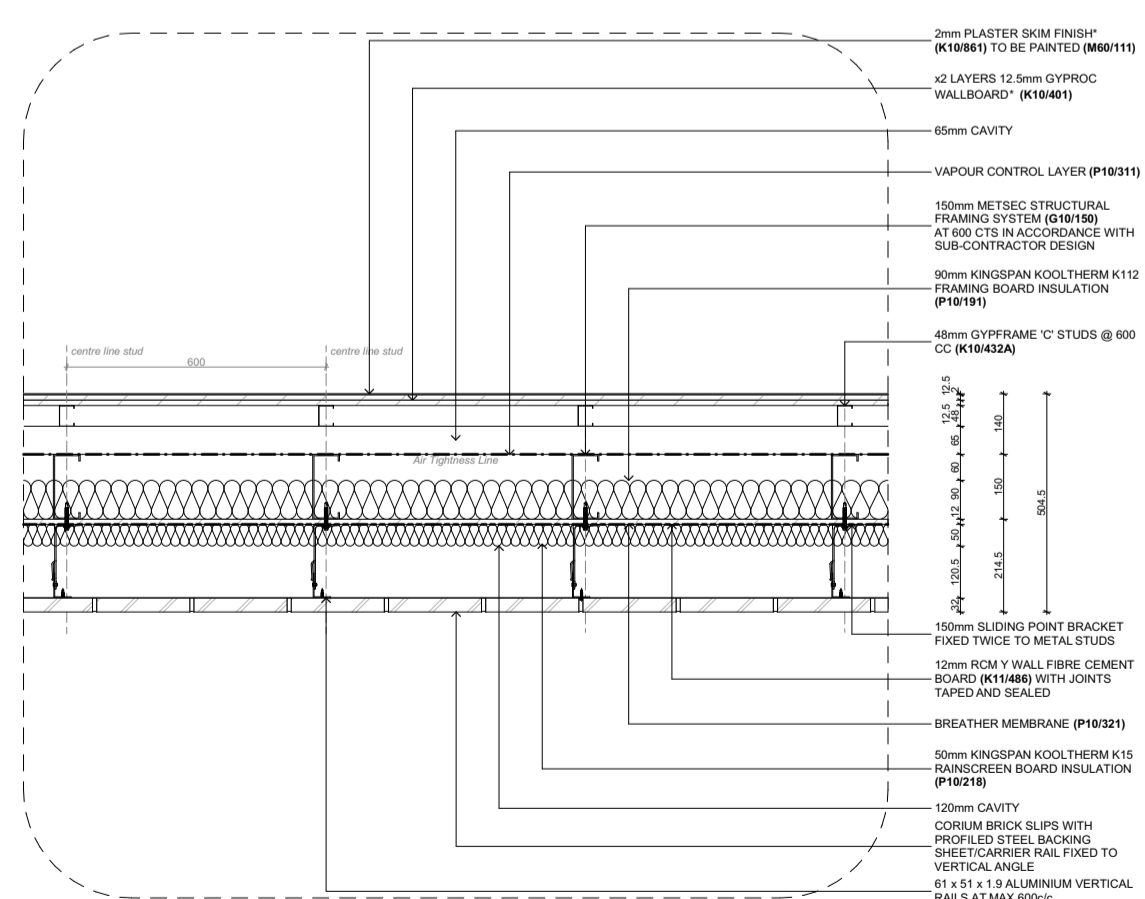
South Elevation
1:200



East Elevation
1:200



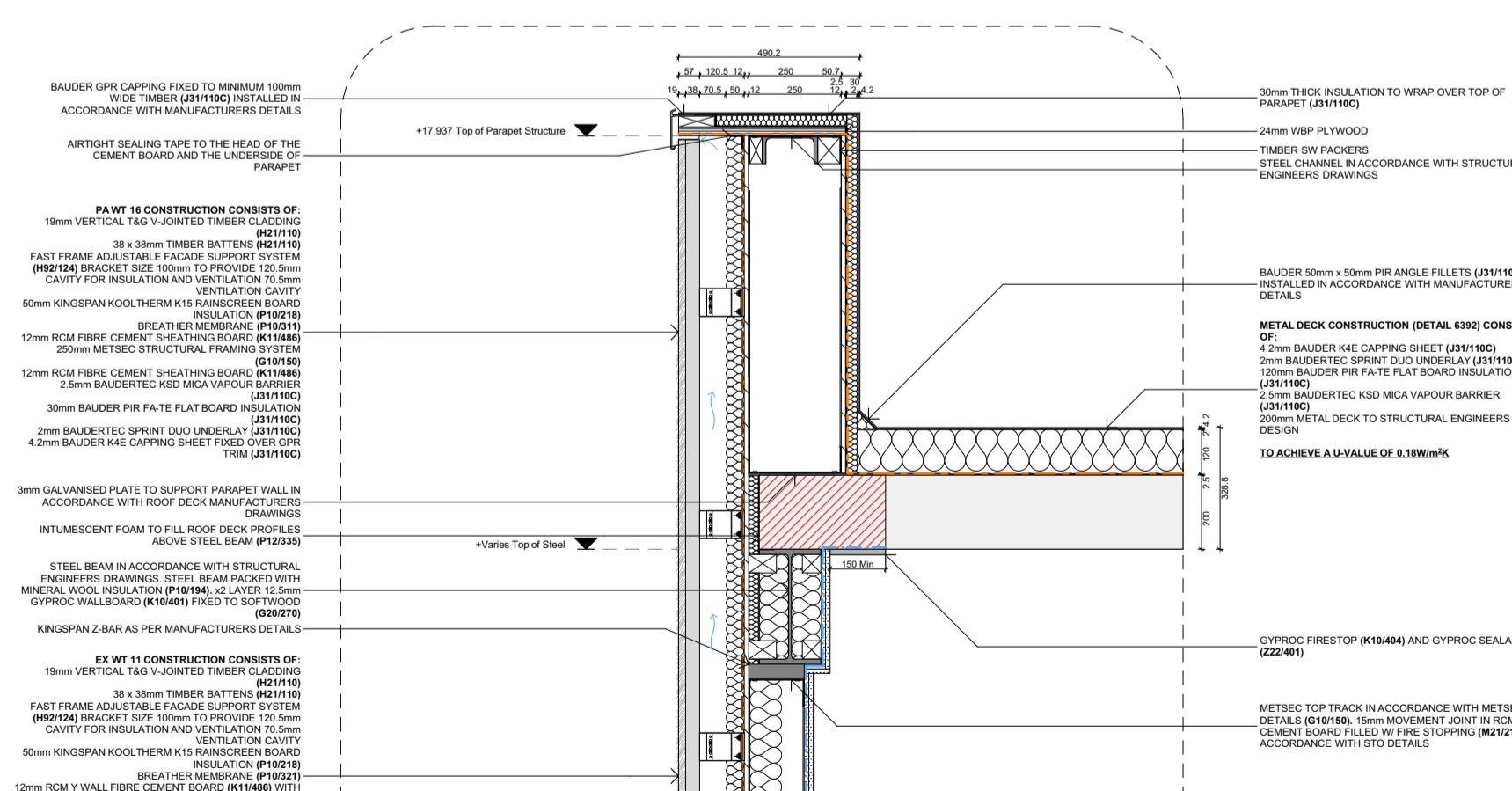
S-3018 Section X1
1:50



EXTERNAL WALL TYPE 01C
(EX WT 01C)
Notes: Refer to Wall Type Plans for all abutment wall design in case to be 12.5mm Gyproc Moisture Resistant Plasterboard (R1900) and 20mm Plaster Skin 650h to be omitted.

PROPERTIES TABLE:

U-Value target	0.25W/mK
U-Value achieved	TBC



DETAIL 634: TIMBER
METAL DECK VERGE DETAIL: EX WT 11 / PA WT 16

