

Construction
& Property

2023

HAYS UK SALARY
& RECRUITING TRENDS
SALARIES

hays.co.uk/construction



Construction	3
Health and safety	5
Surveying consultants	6
General practice surveying	9
Architecture	14
Architectural technology	16
Town planning	17
Civil and structural engineering	18
Facilities management	21
Building services	22
Social housing	24

Methodology

This guide is taken from the Hays UK Salary & Recruiting Trends 2023 guide. The salary data has been compiled using information gathered during 2022 from Hays offices across the UK. It is based on job listings, job offers and candidate registrations.

ABOUT HAYS

To help you meet ever-changing customer demands, we bring the people, the technology and the partnership you need to achieve your goals, now and in the future.

As one of the cornerstones of our economy, it is imperative that the construction industry continues to evolve and grow, with projects delivered on time and innovation allowed to flourish. To make this happen, you need the right professionals. We're not only ready to deliver against your immediate hiring needs in construction, but also have the scale, insight and understanding to shape your future workforce management strategy.

Using a customer-first and insight-led approach to meet your business needs, we make it easy for you to deliver against the complex talent and recruitment landscape you need to navigate.

At Hays we're **working for your tomorrow** to help your business succeed.

It's not just people we provide – whatever your hiring needs, we're always challenging the status quo, so our suite of services delivers the right outcomes for your organisation.

Our core services

Permanent recruitment ▶

- Find passionate people to transform your business
- Fill positions to meet both immediate and future skills needs

Outsourced permanent recruitment ▶

- Reduce time-to-hire with access to ready-made, quality talent pools through Recruitment Process Outsourcing (RPO)
- Leverage progressive talent strategies and mechanisms to ensure you have the right talent in place – for today, and tomorrow

Executive recruitment ▶

- Navigate organisational change and steer your organisation to success by finding those inspirational leaders
- Build success through diversity with bespoke job ads and transparent interview processes

Temporary recruitment ▶

- Achieve instant impact and access niche skillsets with quick hires and reduce long-term costs
- Cut out lengthy admin and processes with externally managed pay and timesheets

Fully managed temporary recruitment ▶

- Gain clarity and control over your contingent headcount through a Managed Services Programme (MSP)
- Combine expertise and insights with proved processes to shape the future of your workforce

Our advisory services

Assessment & Development ▶

- Acquire the right skills for your business needs
- Accelerate time-to-hire with tailored end-to-end support
- Cut costs with bespoke selection solutions

Salary Benchmarking ▶

- Use real-time data to have that competitive edge
- Be insight-led for relevant remuneration strategies
- Gain long-term cost savings

Career Transition Services ▶

- Give your employees the right outplacement and transitional support
- Deliver safe spaces to employees for those honest and open conversations
- Manage restructuring processes with effectiveness, agility and speed

Employer Branding ▶

- Stand out as a top employer brand with a proven USP
- Leverage engaging employer branded recruitment solutions
- Enhance your Employer Value Proposition with a people-first approach

Subscription-based hiring for start-ups and scale-ups ▶

- Gain access to tech talent, skills and content as a service
- Dedicated expert recruitment consultant and account management team
- Branded multi-channel campaign to enhance your Employer Value Proposition

To speak to your local recruiting expert, find your nearest at hays.co.uk/offices

Stay up-to-date with Hays insight into the world of work.

 [Hays](#)

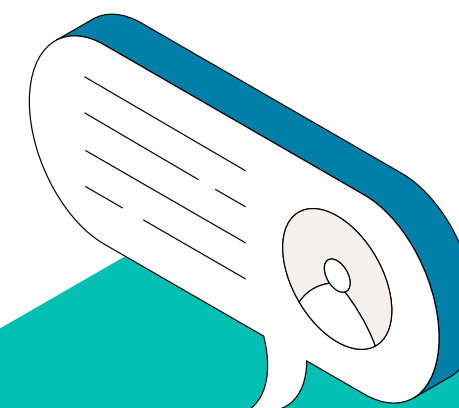
 [@HaysNews](#)

 [UKHays](#)

 [@Hays_UK](#)

 [Hays UK & Ireland](#)

 [hays.co.uk/blog](#)



CONSTRUCTION & PROPERTY

CONSTRUCTION

Operational functions

LONDON		
Site management	£ Range	£ Typical
Senior Site Manager	65,000-78,000	74,000
Site Manager	52,000-65,000	59,000
Assistant Site Manager	36,000-50,000	46,000
General Foreman	30,000-42,000	38,000
Contract and project managers		
Contract Manager	75,000-90,000	85,000
Project Manager	75,000-85,000	78,000
On-site engineering		
Senior Engineer	55,000-65,000	60,000
Engineer	44,000-54,000	52,000

SOUTH EAST ENGLAND		
Site management	£ Range	£ Typical
Senior Site Manager	60,000-75,000	68,000
Site Manager	50,000-65,000	57,000
Assistant Site Manager	28,000-45,000	42,000
General Foreman	25,000-45,000	35,000
Contract and project managers		
Contract Manager	65,000-90,000	78,000
Project Manager	65,000-85,000	75,000
On-site engineering		
Senior Engineer	45,000-60,000	55,000
Engineer	35,000-50,000	45,000

EAST OF ENGLAND		
Site management	£ Range	£ Typical
Senior Site Manager	55,000-70,000	65,000
Site Manager	50,000-62,000	58,000
Assistant Site Manager	40,000-50,000	46,000
General Foreman	33,000-40,000	37,000
Contract and project managers		
Contract Manager	60,000-75,000	70,000
Project Manager	60,000-75,000	70,000
On-site engineering		
Senior Engineer	45,000-57,000	52,000
Engineer	36,000-50,000	43,000

SOUTH WEST ENGLAND		
Site management	£ Range	£ Typical
Senior Site Manager	55,000-70,000	64,000
Site Manager	50,000-60,000	56,000
Assistant Site Manager	35,000-45,000	39,000
General Foreman	32,000-37,000	36,000
Contract and project managers		
Contract Manager	65,000-80,000	71,000
Project Manager	60,000-75,000	71,000
On-site engineering		
Senior Engineer	45,000-55,000	49,000
Engineer	35,000-50,000	43,000

WALES		
Site management	£ Range	£ Typical
Senior Site Manager	55,000-70,000	63,000
Site Manager	50,000-60,000	55,000
Assistant Site Manager	35,000-45,000	38,000
General Foreman	32,000-37,000	35,000
Contract and project managers		
Contract Manager	65,000-80,000	70,000
Project Manager	60,000-75,000	70,000
On-site engineering		
Senior Engineer	45,000-55,000	48,000
Engineer	35,000-50,000	42,000

WEST MIDLANDS		
Site management	£ Range	£ Typical
Senior Site Manager	55,000-70,000	63,000
Site Manager	50,000-60,000	55,000
Assistant Site Manager	35,000-45,000	38,000
General Foreman	30,000-45,000	35,000
Contract and project managers		
Contract Manager	65,000-80,000	70,000
Project Manager	60,000-75,000	70,000
On-site engineering		
Senior Engineer	45,000-55,000	48,000
Engineer	35,000-50,000	42,000

EAST MIDLANDS		
Site management	£ Range	£ Typical
Senior Site Manager	50,000-60,000	55,000
Site Manager	45,000-50,000	48,000
Assistant Site Manager	32,000-40,000	36,000
General Foreman	32,000-42,000	35,000
Contract and project managers		
Contract Manager	58,000-75,000	68,000
Project Manager	55,000-70,000	62,000
On-site engineering		
Senior Engineer	47,000-57,500	52,000
Engineer	33,000-50,000	42,000

YORKSHIRE AND THE HUMBER		
Site management	£ Range	£ Typical
Senior Site Manager	55,000-65,000	57,000
Site Manager	40,000-50,000	48,000
Assistant Site Manager	30,000-40,000	34,000
General Foreman	25,000-35,000	30,000
Contract and project managers		
Contract Manager	55,000-65,000	62,000
Project Manager	55,000-65,000	60,000
On-site engineering		
Senior Engineer	50,000-60,000	52,000
Engineer	30,000-50,000	40,000

NORTH EAST ENGLAND		
Site management	£ Range	£ Typical
Senior Site Manager	52,000-62,000	57,000
Site Manager	42,000-52,000	45,000
Assistant Site Manager	32,000-37,000	34,000
General Foreman	25,000-35,000	30,000
Contract and project managers		
Contract Manager	50,000-65,000	60,000
Project Manager	55,000-62,000	58,000
On-site engineering		
Senior Engineer	45,000-55,000	48,000
Engineer	35,000-45,000	42,000

NORTH WEST ENGLAND		
Site management	£ Range	£ Typical
Senior Site Manager	55,000-60,000	58,000
Site Manager	45,000-55,000	50,000
Assistant Site Manager	35,000-43,000	38,000
General Foreman	35,000-38,000	35,000
Contract and project managers		
Contract Manager	60,000-70,000	65,000
Project Manager	55,000-70,000	60,000
On-site engineering		
Senior Engineer	50,000-65,000	58,000
Engineer	40,000-50,000	46,000

NORTHERN IRELAND		
Site management	£ Range	£ Typical
Senior Site Manager	45,000-65,000	55,000
Site Manager	35,000-55,000	46,000
Assistant Site Manager	26,000-34,000	32,000
General Foreman	31,000-50,000	42,000
Contract and project managers		
Contract Manager	45,000-85,000	65,000
Project Manager	45,000-90,000	60,000
On-site engineering		
Senior Engineer	40,000-48,000	46,000
Engineer	32,000-40,000	36,500

SCOTLAND		
Site management	£ Range	£ Typical
Senior Site Manager	55,000-65,000	58,000
Site Manager	48,000-58,000	53,000
Assistant Site Manager	37,000-46,000	42,000
General Foreman	37,000-44,000	40,000
Contract and project managers		
Contract Manager	55,000-65,000	62,000
Project Manager	65,000-75,000	68,000
On-site engineering		
Senior Engineer	44,000-50,000	47,000
Engineer	40,000-45,000	42,000

CONSTRUCTION & PROPERTY

CONSTRUCTION

Commercial functions

LONDON		
Quantity surveyors	£ Range	£ Typical
Commercial Manager	90,000-130,000	115,000
Senior Quantity Surveyor	75,000-90,000	83,000
Intermediate Quantity Surveyor	55,000-70,000	60,000
Assistant Quantity Surveyor	38,000-50,000	40,000
Estimators	£ Range	£ Typical
Senior Estimator	75,000-95,000	85,000
Estimator	60,000-75,000	68,000
Assistant Estimator	38,000-55,000	48,000

SOUTH EAST ENGLAND		
Quantity surveyors	£ Range	£ Typical
Commercial Manager	85,000-110,000	100,000
Senior Quantity Surveyor	65,000-85,000	75,000
Intermediate Quantity Surveyor	50,000-60,000	55,000
Assistant Quantity Surveyor	25,000-45,000	37,000
Estimators	£ Range	£ Typical
Senior Estimator	65,000-90,000	75,000
Estimator	50,000-70,000	65,000
Assistant Estimator	25,000-45,000	38,000

EAST OF ENGLAND		
Quantity surveyors	£ Range	£ Typical
Commercial Manager	65,000-80,000	75,000
Senior Quantity Surveyor	60,000-75,000	70,000
Intermediate Quantity Surveyor	40,000-60,000	52,000
Assistant Quantity Surveyor	27,000-40,000	36,000
Estimators	£ Range	£ Typical
Senior Estimator	55,000-75,000	65,000
Estimator	45,000-65,000	57,000
Assistant Estimator	30,000-47,000	37,000

SOUTH WEST ENGLAND		
Quantity surveyors	£ Range	£ Typical
Commercial Manager	80,000-90,000	85,000
Senior Quantity Surveyor	60,000-70,000	66,000
Intermediate Quantity Surveyor	45,000-55,000	54,000
Assistant Quantity Surveyor	30,000-36,000	35,000
Estimators	£ Range	£ Typical
Senior Estimator	70,000-75,000	71,000
Estimator	55,000-65,000	59,000
Assistant Estimator	34,000-45,000	35,000

WALES		
Quantity surveyors	£ Range	£ Typical
Commercial Manager	65,000-85,000	75,000
Senior Quantity Surveyor	50,000-70,000	62,000
Intermediate Quantity Surveyor	40,000-45,000	45,000
Assistant Quantity Surveyor	25,000-38,000	30,000
Estimators	£ Range	£ Typical
Senior Estimator	60,000-75,000	69,000
Estimator	45,000-65,000	55,000
Assistant Estimator	30,000-42,000	33,000

WEST MIDLANDS		
Quantity surveyors	£ Range	£ Typical
Commercial Manager	65,000-85,000	75,000
Senior Quantity Surveyor	50,000-70,000	62,000
Intermediate Quantity Surveyor	40,000-45,000	45,000
Assistant Quantity Surveyor	25,000-38,000	30,000
Estimators	£ Range	£ Typical
Senior Estimator	60,000-75,000	70,000
Estimator	45,000-65,000	55,000
Assistant Estimator	25,000-35,000	32,000

EAST MIDLANDS		
Quantity surveyors	£ Range	£ Typical
Commercial Manager	68,000-80,000	75,000
Senior Quantity Surveyor	52,000-67,000	57,500
Intermediate Quantity Surveyor	40,000-50,000	45,000
Assistant Quantity Surveyor	25,000-35,000	30,000
Estimators	£ Range	£ Typical
Senior Estimator	55,000-70,000	65,000
Estimator	45,000-55,000	52,000
Assistant Estimator	25,000-35,000	32,000

YORKSHIRE AND THE HUMBER		
Quantity surveyors	£ Range	£ Typical
Commercial Manager	70,000-80,000	75,000
Senior Quantity Surveyor	55,000-65,000	60,000
Intermediate Quantity Surveyor	40,000-50,000	45,000
Assistant Quantity Surveyor	25,000-35,000	32,000
Estimators	£ Range	£ Typical
Senior Estimator	60,000-70,000	65,000
Estimator	40,000-55,000	48,000
Assistant Estimator	25,000-35,000	30,000

NORTH EAST ENGLAND		
Quantity surveyors	£ Range	£ Typical
Commercial Manager	65,000-80,000	73,000
Senior Quantity Surveyor	50,000-75,000	57,000
Intermediate Quantity Surveyor	39,000-42,000	42,000
Assistant Quantity Surveyor	25,000-38,000	33,000
Estimators	£ Range	£ Typical
Senior Estimator	50,000-60,000	56,000
Estimator	43,000-55,000	46,000
Assistant Estimator	30,000-35,000	32,000

NORTH WEST ENGLAND		
Quantity surveyors	£ Range	£ Typical
Commercial Manager	70,000-78,000	73,000
Senior Quantity Surveyor	58,000-65,000	60,000
Intermediate Quantity Surveyor	45,000-55,000	50,000
Assistant Quantity Surveyor	35,000-40,000	37,000
Estimators	£ Range	£ Typical
Senior Estimator	60,000-70,000	65,000
Estimator	45,000-60,000	55,000
Assistant Estimator	35,000-45,000	37,000

NORTHERN IRELAND		
Quantity surveyors	£ Range	£ Typical
Commercial Manager	67,000-77,000	72,000
Senior Quantity Surveyor	55,000-65,000	60,000
Intermediate Quantity Surveyor	40,000-55,000	47,000
Assistant Quantity Surveyor	32,000-40,000	38,500
Estimators	£ Range	£ Typical
Senior Estimator	55,000-65,000	61,000
Estimator	45,000-55,000	52,000
Assistant Estimator	35,000-45,000	40,000

SCOTLAND		
Quantity surveyors	£ Range	£ Typical
Commercial Manager	67,000-77,000	72,000
Senior Quantity Surveyor	60,000-70,000	63,000
Intermediate Quantity Surveyor	45,000-60,000	52,000
Assistant Quantity Surveyor	35,000-42,000	40,000
Estimators	£ Range	£ Typical
Senior Estimator	62,000-74,000	65,000
Estimator	45,000-55,000	52,000
Assistant Estimator	35,000-45,000	40,000

HEALTH & SAFETY

LONDON	£ Range	£ Typical
H&S Director	90,000-140,000	120,000
Senior H&S Manager	65,000-85,000	75,000
H&S Manager	52,000-65,000	60,000
H&S Advisor	36,000-50,000	45,000
H&S Coordinator	25,000-35,000	32,000
CDM Coordinator/Principal Designer	50,000-65,000	60,000

SOUTH EAST ENGLAND	£ Range	£ Typical
H&S Director	85,000-130,000	100,000
Senior H&S Manager	60,000-80,000	68,000
H&S Manager	45,000-65,000	55,000
H&S Advisor	36,000-50,000	45,000
H&S Coordinator	25,000-35,000	30,000
CDM Coordinator/Principal Designer	50,000-60,000	55,000

EAST OF ENGLAND	£ Range	£ Typical
H&S Director	70,000-90,000	80,000
Senior H&S Manager	50,000-70,000	62,000
H&S Manager	45,000-58,000	52,000
H&S Advisor	35,000-48,000	40,000
H&S Coordinator	25,000-35,000	30,000
CDM Coordinator/Principal Designer	48,000-60,000	50,000

SOUTH WEST ENGLAND	£ Range	£ Typical
H&S Director	75,000-88,000	85,000
Senior H&S Manager	55,000-70,000	62,000
H&S Manager	45,000-58,000	52,000
H&S Advisor	38,000-48,000	42,000
H&S Coordinator	25,000-35,000	32,000
CDM Coordinator/Principal Designer	48,000-60,000	48,000

WALES	£ Range	£ Typical
H&S Director	65,000-83,000	77,000
Senior H&S Manager	55,000-65,000	56,000
H&S Manager	40,000-53,000	47,000
H&S Advisor	30,000-40,000	33,500
H&S Coordinator	23,000-30,000	26,000
CDM Coordinator/Principal Designer	42,000-53,000	45,000

WEST MIDLANDS	£ Range	£ Typical
H&S Director	85,000-125,000	100,000
Senior H&S Manager	55,000-65,000	60,000
H&S Manager	45,000-55,000	50,000
H&S Advisor	35,000-45,000	40,000
H&S Coordinator	25,000-35,000	30,000
CDM Coordinator/Principal Designer	45,000-55,000	50,000

EAST MIDLANDS	£ Range	£ Typical
H&S Director	85,000-125,000	100,000
Senior H&S Manager	55,000-65,000	60,000
H&S Manager	45,000-55,000	50,000
H&S Advisor	35,000-45,000	40,000
H&S Coordinator	25,000-35,000	30,000
CDM Coordinator/Principal Designer	45,000-55,000	50,000

YORKSHIRE AND THE HUMBER	£ Range	£ Typical
H&S Director	85,000-110,000	100,000
Senior H&S Manager	55,000-65,000	60,000
H&S Manager	45,000-55,000	49,500
H&S Advisor	35,000-45,000	39,000
H&S Coordinator	25,000-35,000	29,000
CDM Coordinator/Principal Designer	45,000-55,000	49,500

NORTH EAST ENGLAND	£ Range	£ Typical
H&S Director	62,000-77,000	73,000
Senior H&S Manager	42,000-55,000	51,500
H&S Manager	37,000-47,000	42,000
H&S Advisor	26,000-36,000	30,000
H&S Coordinator	22,000-30,000	28,000
CDM Coordinator/Principal Designer	37,000-47,000	43,000

NORTH WEST ENGLAND	£ Range	£ Typical
H&S Director	70,000-85,000	77,500
Senior H&S Manager	55,000-65,000	58,000
H&S Manager	45,000-55,000	50,000
H&S Advisor	35,000-45,000	40,000
H&S Coordinator	30,000-33,000	31,000
CDM Coordinator/Principal Designer	47,000-52,000	50,000

NORTHERN IRELAND	£ Range	£ Typical
H&S Director	50,000-70,000	60,000
Senior H&S Manager	45,000-60,000	50,000
H&S Manager	35,000-50,000	45,000
H&S Advisor	28,000-45,000	35,000
H&S Coordinator	22,000-28,000	24,000
CDM Coordinator/Principal Designer	30,000-40,000	35,000

SCOTLAND	£ Range	£ Typical
H&S Director	49,000-57,000	55,500
Senior H&S Manager	42,000-47,000	45,500
H&S Manager	36,000-42,000	41,000
H&S Advisor	28,500-34,000	32,000
H&S Coordinator	19,500-23,500	22,750
CDM Coordinator/Principal Designer	46,000-61,000	51,000

SURVEYING CONSULTANTS

Professional quantity surveyors

LONDON	£ Range	£ Typical
Partner/Director	105,000-125,000	115,000
Associate	75,000-85,000	80,000
Senior Surveyor	55,000-65,000	62,000
Newly Qualified Surveyor	45,000-52,000	48,500
Graduate Surveyor	25,000-35,000	30,000

SOUTH EAST ENGLAND	£ Range	£ Typical
Partner/Director	80,000-100,000	95,000
Associate	65,000-75,000	70,000
Senior Surveyor	50,000-60,000	58,000
Newly Qualified Surveyor	41,000-50,000	46,000
Graduate Surveyor	23,000-29,000	27,000

EAST OF ENGLAND	£ Range	£ Typical
Partner/Director	80,000-100,000	90,000
Associate	60,000-80,000	70,000
Senior Surveyor	45,000-60,000	55,000
Newly Qualified Surveyor	35,000-45,000	43,000
Graduate Surveyor	25,000-30,000	26,000

SOUTH WEST ENGLAND	£ Range	£ Typical
Partner/Director	71,000-77,000	75,000
Associate	60,000-75,000	66,000
Senior Surveyor	54,000-57,000	54,000
Newly Qualified Surveyor	40,000-45,000	43,000
Graduate Surveyor	25,000-30,000	26,500

WALES	£ Range	£ Typical
Partner/Director	70,000-76,000	74,000
Associate	60,000-70,000	65,000
Senior Surveyor	50,000-55,000	53,000
Newly Qualified Surveyor	37,000-42,000	42,000
Graduate Surveyor	24,000-29,000	25,000

WEST MIDLANDS	£ Range	£ Typical
Partner/Director	70,000-80,000	75,000
Associate	60,000-70,000	65,000
Senior Surveyor	50,000-60,000	55,000
Newly Qualified Surveyor	35,000-50,000	42,000
Graduate Surveyor	20,000-28,000	25,000

EAST MIDLANDS	£ Range	£ Typical
Partner/Director	70,000-80,000	75,000
Associate	60,000-70,000	65,000
Senior Surveyor	50,000-60,000	55,000
Newly Qualified Surveyor	35,000-50,000	42,000
Graduate Surveyor	20,000-28,000	25,000

YORKSHIRE AND THE HUMBER	£ Range	£ Typical
Partner/Director	65,000-80,000	72,000
Associate	55,000-65,000	60,000
Senior Surveyor	42,000-55,000	48,000
Newly Qualified Surveyor	30,000-40,000	37,500
Graduate Surveyor	24,000-29,000	26,000

NORTH EAST ENGLAND	£ Range	£ Typical
Partner/Director	62,000-72,000	64,000
Associate	52,000-62,000	58,000
Senior Surveyor	45,000-55,000	50,000
Newly Qualified Surveyor	26,000-35,000	33,500
Graduate Surveyor	22,000-26,000	24,500

NORTH WEST ENGLAND	£ Range	£ Typical
Partner/Director	70,000-85,000	78,000
Associate	60,000-68,000	60,000
Senior Surveyor	45,000-50,000	48,000
Newly Qualified Surveyor	35,000-45,000	42,000
Graduate Surveyor	25,000-30,000	27,000

NORTHERN IRELAND	£ Range	£ Typical
Partner/Director	70,000-80,000	75,000
Associate	50,000-60,000	55,000
Senior Surveyor	40,000-50,000	47,000
Newly Qualified Surveyor	30,000-40,000	36,500
Graduate Surveyor	21,000-26,000	22,500

SCOTLAND	£ Range	£ Typical
Partner/Director	65,000-82,000	80,000
Associate	55,000-67,000	65,000
Senior Surveyor	45,000-57,000	55,000
Newly Qualified Surveyor	35,000-42,000	40,000
Graduate Surveyor	23,500-27,000	26,000

SURVEYING CONSULTANTS

Building surveyors

LONDON	£ Range	£ Typical
Partner/Director	90,000-120,000	100,000
Associate	70,000-85,000	76,500
Senior Surveyor	55,000-65,000	60,000
Newly Qualified Building Surveyor	45,000-55,000	50,000
Graduate Building Surveyor	27,000-35,000	30,000
Maintenance Surveyor	40,000-55,000	45,000

SOUTH EAST ENGLAND	£ Range	£ Typical
Partner/Director	75,000-90,000	85,000
Associate	60,000-75,000	70,000
Senior Surveyor	55,000-65,000	58,000
Newly Qualified Building Surveyor	38,000-45,000	42,000
Graduate Building Surveyor	24,000-28,000	25,000
Maintenance Surveyor	35,000-45,000	38,000

EAST OF ENGLAND	£ Range	£ Typical
Partner/Director	75,000-100,000	85,000
Associate	55,000-75,000	70,000
Senior Surveyor	44,000-55,000	50,000
Newly Qualified Building Surveyor	30,000-45,000	40,000
Graduate Building Surveyor	24,000-30,000	27,000
Maintenance Surveyor	30,000-48,000	37,000

SOUTH WEST ENGLAND	£ Range	£ Typical
Partner/Director	70,000-74,000	72,000
Associate	64,000-68,000	66,000
Senior Surveyor	50,000-56,000	51,000
Newly Qualified Building Surveyor	35,000-40,000	37,000
Graduate Building Surveyor	25,000-30,000	26,000
Maintenance Surveyor	34,000-38,000	37,000

WALES	£ Range	£ Typical
Partner/Director	68,000-73,000	71,000
Associate	62,000-66,000	65,000
Senior Surveyor	48,000-55,000	50,000
Newly Qualified Building Surveyor	32,000-38,000	36,000
Graduate Building Surveyor	22,000-28,000	25,000
Maintenance Surveyor	31,000-37,000	36,000

WEST MIDLANDS	£ Range	£ Typical
Partner/Director	70,000-80,000	75,000
Associate	60,000-70,000	65,000
Senior Surveyor	45,000-65,000	50,000
Newly Qualified Building Surveyor	30,000-40,000	36,000
Graduate Building Surveyor	25,000-28,000	25,000
Maintenance Surveyor	30,000-40,000	37,000

EAST MIDLANDS	£ Range	£ Typical
Partner/Director	70,000-80,000	75,000
Associate	60,000-70,000	65,000
Senior Surveyor	45,000-65,000	50,000
Newly Qualified Building Surveyor	30,000-40,000	36,000
Graduate Building Surveyor	25,000-28,000	25,000
Maintenance Surveyor	30,000-40,000	37,000

YORKSHIRE AND THE HUMBER	£ Range	£ Typical
Partner/Director	65,000-80,000	75,000
Associate	55,000-65,000	62,000
Senior Surveyor	40,000-55,000	48,000
Newly Qualified Building Surveyor	30,000-40,000	37,000
Graduate Building Surveyor	24,000-29,000	25,500
Maintenance Surveyor	30,000-40,000	34,000

NORTH EAST ENGLAND	£ Range	£ Typical
Partner/Director	50,000-65,000	61,000
Associate	53,000-63,000	60,000
Senior Surveyor	43,000-53,000	48,000
Newly Qualified Building Surveyor	26,000-35,000	32,000
Graduate Building Surveyor	22,000-26,000	24,500
Maintenance Surveyor	32,000-42,000	40,000

NORTH WEST ENGLAND	£ Range	£ Typical
Partner/Director	80,000-90,000	85,000
Associate	60,000-68,000	65,000
Senior Surveyor	45,000-50,000	48,000
Newly Qualified Building Surveyor	38,000-45,000	40,000
Graduate Building Surveyor	25,000-30,000	28,000
Maintenance Surveyor	30,000-40,000	35,000

NORTHERN IRELAND	£ Range	£ Typical
Partner/Director	60,000-70,000	65,000
Associate	45,000-55,000	50,000
Senior Surveyor	35,000-42,500	40,000
Newly Qualified Building Surveyor	30,000-40,000	35,000
Graduate Building Surveyor	21,000-26,000	22,000
Maintenance Surveyor	25,000-33,000	30,000

SCOTLAND	£ Range	£ Typical
Partner/Director	60,000-80,000	70,000
Associate	55,000-60,000	58,000
Senior Surveyor	45,000-55,000	45,000
Newly Qualified Building Surveyor	33,000-45,000	37,000
Graduate Building Surveyor	22,000-26,000	26,000
Maintenance Surveyor	25,000-30,000	29,000

SURVEYING CONSULTANTS

Project managers

LONDON	£ Range	£ Typical
Partner/Director	90,000-120,000	100,000
Associate	70,000-85,000	80,000
Senior Surveyor	60,000-75,000	65,000
Newly Qualified Surveyor	45,000-55,000	50,000
APC Surveyor	30,000-35,000	35,000
Graduate	25,000-30,000	28,000

WALES	£ Range	£ Typical
Partner/Director	74,000-79,000	78,000
Associate	59,000-69,000	66,000
Senior Surveyor	45,000-52,000	48,000
Newly Qualified Surveyor	35,000-40,000	37,000
APC Surveyor	27,000-38,000	28,500
Graduate	23,000-34,000	25,000

NORTH EAST ENGLAND	£ Range	£ Typical
Partner/Director	60,000-70,000	65,000
Associate	50,000-60,000	57,000
Senior Surveyor	42,000-48,000	45,000
Newly Qualified Surveyor	29,000-37,000	33,000
APC Surveyor	22,000-27,000	25,000
Graduate	20,000-25,000	24,000

SOUTH EAST ENGLAND	£ Range	£ Typical
Partner/Director	80,000-100,000	90,000
Associate	65,000-80,000	70,000
Senior Surveyor	55,000-65,000	60,000
Newly Qualified Surveyor	45,000-50,000	45,000
APC Surveyor	28,000-36,000	33,000
Graduate	24,000-28,000	25,000

WEST MIDLANDS	£ Range	£ Typical
Partner/Director	75,000-85,000	80,000
Associate	55,000-70,000	68,000
Senior Surveyor	45,000-52,000	48,000
Newly Qualified Surveyor	35,000-40,000	37,000
APC Surveyor	25,000-30,000	28,000
Graduate	23,000-28,000	25,000

NORTH WEST ENGLAND	£ Range	£ Typical
Partner/Director	80,000-90,000	86,000
Associate	60,000-70,000	65,000
Senior Surveyor	45,000-60,000	58,000
Newly Qualified Surveyor	35,000-40,000	40,000
APC Surveyor	28,000-35,000	30,000
Graduate	25,000-30,000	26,000

EAST OF ENGLAND	£ Range	£ Typical
Partner/Director	70,000-100,000	80,000
Associate	55,000-70,000	65,000
Senior Surveyor	48,000-60,000	54,000
Newly Qualified Surveyor	35,000-45,000	40,000
APC Surveyor	28,000-35,000	31,000
Graduate	24,000-30,000	27,000

EAST MIDLANDS	£ Range	£ Typical
Partner/Director	65,000-70,000	67,000
Associate	50,000-65,000	60,000
Senior Surveyor	45,000-52,000	48,000
Newly Qualified Surveyor	35,000-40,000	37,000
APC Surveyor	25,000-30,000	28,000
Graduate	23,000-28,000	25,000

NORTHERN IRELAND	£ Range	£ Typical
Partner/Director	70,000-80,000	75,000
Associate	55,000-65,000	60,000
Senior Surveyor	42,000-52,000	47,000
Newly Qualified Surveyor	32,000-40,000	36,500
APC Surveyor	27,500-32,000	30,000
Graduate	21,000-26,000	23,000

SOUTH WEST ENGLAND	£ Range	£ Typical
Partner/Director	75,000-85,000	80,000
Associate	60,000-70,000	68,000
Senior Surveyor	50,000-65,000	51,000
Newly Qualified Surveyor	32,000-50,000	38,000
APC Surveyor	28,000-40,000	29,500
Graduate	25,000-35,000	26,000

YORKSHIRE AND THE HUMBER	£ Range	£ Typical
Partner/Director	65,000-80,000	72,000
Associate	50,000-65,000	60,000
Senior Surveyor	42,000-52,000	47,000
Newly Qualified Surveyor	30,000-40,000	37,000
APC Surveyor	25,000-32,000	28,000
Graduate	22,000-28,000	25,000

SCOTLAND	£ Range	£ Typical
Partner/Director	75,000-100,000	80,000
Associate	62,000-72,000	70,000
Senior Surveyor	45,000-59,000	55,000
Newly Qualified Surveyor	36,000-46,000	45,000
APC Surveyor	28,000-36,000	35,000
Graduate	23,000-25,000	25,000

GENERAL PRACTICE SURVEYING

General practice surveyors

LONDON	£ Range	£ Typical
Partner/Director	70,000-100,000	85,000
Associate	60,000-68,000	65,000
Senior Surveyor	45,000-55,000	50,000
Newly Qualified Surveyor	38,000-43,000	42,000
Graduate Surveyor	25,000-30,000	30,000

WALES	£ Range	£ Typical
Partner/Director	70,000-78,000	75,000
Associate	60,000-70,000	65,000
Senior Surveyor	40,000-50,000	47,000
Newly Qualified Surveyor	33,000-42,000	39,000
Graduate Surveyor	25,000-30,000	27,000

NORTH EAST ENGLAND	£ Range	£ Typical
Partner/Director	60,000-75,000	70,000
Associate	52,000-60,000	57,000
Senior Surveyor	42,000-52,000	51,000
Newly Qualified Surveyor	26,000-36,000	34,000
Graduate Surveyor	21,000-25,000	23,500

SOUTH EAST ENGLAND	£ Range	£ Typical
Partner/Director	71,000-88,000	81,000
Associate	60,000-68,000	65,000
Senior Surveyor	50,000-60,000	55,000
Newly Qualified Surveyor	38,000-43,000	40,000
Graduate Surveyor	23,000-26,000	24,500

WEST MIDLANDS	£ Range	£ Typical
Partner/Director	62,000-72,000	67,000
Associate	55,000-65,000	58,000
Senior Surveyor	42,000-52,000	47,000
Newly Qualified Surveyor	32,000-42,000	37,000
Graduate Surveyor	23,000-29,000	27,000

NORTH WEST ENGLAND	£ Range	£ Typical
Partner/Director	75,000-85,000	80,000
Associate	60,000-68,000	60,000
Senior Surveyor	42,000-50,000	46,000
Newly Qualified Surveyor	35,000-40,000	37,000
Graduate Surveyor	25,000-28,000	26,000

EAST OF ENGLAND	£ Range	£ Typical
Partner/Director	65,000-85,000	72,000
Associate	50,000-65,000	58,000
Senior Surveyor	40,000-52,000	48,000
Newly Qualified Surveyor	35,000-42,000	40,000
Graduate Surveyor	22,000-28,000	25,000

EAST MIDLANDS	£ Range	£ Typical
Partner/Director	60,000-70,000	65,000
Associate	50,000-60,000	55,000
Senior Surveyor	40,000-50,000	45,000
Newly Qualified Surveyor	30,000-40,000	35,000
Graduate Surveyor	22,000-25,000	25,000

NORTHERN IRELAND	£ Range	£ Typical
Partner/Director	60,000-75,000	68,000
Associate	45,000-55,000	52,000
Senior Surveyor	36,000-41,000	41,000
Newly Qualified Surveyor	26,000-36,000	34,000
Graduate Surveyor	19,000-24,000	20,500

SOUTH WEST ENGLAND	£ Range	£ Typical
Partner/Director	75,000-80,000	77,000
Associate	65,000-75,000	67,000
Senior Surveyor	45,000-53,000	50,000
Newly Qualified Surveyor	35,000-45,000	42,000
Graduate Surveyor	25,000-30,000	28,000

YORKSHIRE AND THE HUMBER	£ Range	£ Typical
Partner/Director	70,000-80,000	75,000
Associate	50,000-60,000	52,000
Senior Surveyor	40,000-50,000	45,000
Newly Qualified Surveyor	30,000-40,000	35,000
Graduate Surveyor	22,000-28,000	24,000

SCOTLAND	£ Range	£ Typical
Partner/Director	55,000-75,000	72,000
Associate	47,000-53,000	52,000
Senior Surveyor	40,000-47,000	45,000
Newly Qualified Surveyor	30,000-37,000	34,000
Graduate Surveyor	20,000-25,000	24,000

GENERAL PRACTICE SURVEYING

Property managers

LONDON	£ Range	£ Typical
Partner/Director	80,000-100,000	85,000
Associate	60,000-70,000	65,000
Senior Surveyor	45,000-52,000	50,000
Newly Qualified Surveyor	38,000-42,000	41,000
Graduate Surveyor	25,000-28,000	28,000

SOUTH EAST ENGLAND	£ Range	£ Typical
Partner/Director	65,000-85,000	73,000
Associate	58,000-65,000	60,000
Senior Surveyor	50,000-60,000	53,000
Newly Qualified Surveyor	38,000-43,000	40,000
Graduate Surveyor	23,000-26,000	24,500

EAST OF ENGLAND	£ Range	£ Typical
Partner/Director	65,000-85,000	72,000
Associate	50,000-65,000	58,000
Senior Surveyor	40,000-52,000	48,000
Newly Qualified Surveyor	35,000-40,000	38,000
Graduate Surveyor	22,000-28,000	25,000

SOUTH WEST ENGLAND	£ Range	£ Typical
Partner/Director	73,000-85,000	74,000
Associate	64,000-80,000	65,000
Senior Surveyor	50,000-60,000	54,000
Newly Qualified Surveyor	35,000-50,000	38,000
Graduate Surveyor	25,000-30,000	26,000

WALES	£ Range	£ Typical
Partner/Director	62,000-72,000	71,000
Associate	57,000-67,000	64,000
Senior Surveyor	45,000-55,000	53,000
Newly Qualified Surveyor	30,000-40,000	37,000
Graduate Surveyor	22,000-28,000	25,500

WEST MIDLANDS	£ Range	£ Typical
Partner/Director	62,000-72,000	68,000
Associate	57,000-67,000	64,000
Senior Surveyor	45,000-55,000	53,000
Newly Qualified Surveyor	30,000-40,000	37,000
Graduate Surveyor	22,000-28,000	25,000

EAST MIDLANDS	£ Range	£ Typical
Partner/Director	57,000-67,000	64,000
Associate	55,000-65,000	57,000
Senior Surveyor	45,000-55,000	45,000
Newly Qualified Surveyor	30,000-40,000	35,000
Graduate Surveyor	20,000-25,000	23,000

YORKSHIRE AND THE HUMBER	£ Range	£ Typical
Partner/Director	65,000-80,000	75,000
Associate	48,000-60,000	52,000
Senior Surveyor	40,000-50,000	48,000
Newly Qualified Surveyor	30,000-40,000	35,000
Graduate Surveyor	23,000-28,000	25,000

NORTH EAST ENGLAND	£ Range	£ Typical
Partner/Director	65,000-75,000	70,000
Associate	48,000-60,000	53,000
Senior Surveyor	40,000-50,000	48,000
Newly Qualified Surveyor	30,000-40,000	33,000
Graduate Surveyor	23,000-28,000	25,000

NORTH WEST ENGLAND	£ Range	£ Typical
Partner/Director	65,000-85,000	78,000
Associate	60,000-65,000	60,000
Senior Surveyor	45,000-50,000	48,000
Newly Qualified Surveyor	35,000-40,000	38,000
Graduate Surveyor	25,000-30,000	26,000

NORTHERN IRELAND	£ Range	£ Typical
Partner/Director	57,000-75,000	72,000
Associate	45,000-55,000	51,000
Senior Surveyor	36,000-43,000	41,000
Newly Qualified Surveyor	26,000-36,000	33,000
Graduate Surveyor	18,500-22,500	20,500

SCOTLAND	£ Range	£ Typical
Partner/Director	60,000-72,000	70,000
Associate	50,000-60,000	55,000
Senior Surveyor	38,000-45,000	42,000
Newly Qualified Surveyor	30,000-40,000	33,000
Graduate Surveyor	22,000-26,000	25,000

GENERAL PRACTICE SURVEYING

Commercial surveyors

LONDON	£ Range	£ Typical
Partner/Director	70,000-100,000	85,000
Associate	55,000-65,000	65,000
Senior Surveyor	42,000-52,000	50,000
Newly Qualified Surveyor	38,000-40,000	40,000
Graduate Surveyor	25,000-28,000	28,000

WALES	£ Range	£ Typical
Partner/Director	65,000-75,000	69,000
Associate	51,000-61,000	57,000
Senior Surveyor	41,000-51,000	47,000
Newly Qualified Surveyor	29,000-39,000	37,000
Graduate Surveyor	24,000-29,000	26,000

NORTH EAST ENGLAND	£ Range	£ Typical
Partner/Director	60,000-70,000	65,000
Associate	46,000-56,000	53,000
Senior Surveyor	42,000-52,000	50,000
Newly Qualified Surveyor	28,000-35,000	31,000
Graduate Surveyor	21,000-26,000	23,000

SOUTH EAST ENGLAND	£ Range	£ Typical
Partner/Director	65,000-85,000	72,000
Associate	55,000-65,000	58,000
Senior Surveyor	50,000-60,000	54,000
Newly Qualified Surveyor	38,000-43,000	40,000
Graduate Surveyor	22,000-26,000	24,000

WEST MIDLANDS	£ Range	£ Typical
Partner/Director	55,000-65,000	62,000
Associate	51,000-61,000	57,000
Senior Surveyor	41,000-51,000	47,000
Newly Qualified Surveyor	29,000-39,000	37,000
Graduate Surveyor	23,000-27,000	26,000

NORTH WEST ENGLAND	£ Range	£ Typical
Partner/Director	65,000-85,000	82,000
Associate	55,000-65,000	59,000
Senior Surveyor	40,000-50,000	45,000
Newly Qualified Surveyor	35,000-45,000	38,000
Graduate Surveyor	25,000-30,000	26,000

EAST OF ENGLAND	£ Range	£ Typical
Partner/Director	65,000-85,000	70,000
Associate	50,000-65,000	58,000
Senior Surveyor	40,000-54,000	50,000
Newly Qualified Surveyor	32,000-42,000	38,000
Graduate Surveyor	24,000-30,000	25,000

EAST MIDLANDS	£ Range	£ Typical
Partner/Director	55,000-65,000	60,000
Associate	50,000-55,000	55,000
Senior Surveyor	40,000-50,000	47,000
Newly Qualified Surveyor	28,000-35,000	34,000
Graduate Surveyor	22,000-28,000	24,000

NORTHERN IRELAND	£ Range	£ Typical
Partner/Director	65,000-75,000	72,000
Associate	46,000-56,000	53,000
Senior Surveyor	36,000-42,000	39,000
Newly Qualified Surveyor	27,000-36,000	33,000
Graduate Surveyor	18,500-22,500	21,000

SOUTH WEST ENGLAND	£ Range	£ Typical
Partner/Director	75,000-85,000	76,000
Associate	59,000-72,000	60,000
Senior Surveyor	45,000-60,000	48,000
Newly Qualified Surveyor	37,000-45,000	38,000
Graduate Surveyor	25,000-30,000	27,000

YORKSHIRE AND THE HUMBER	£ Range	£ Typical
Partner/Director	65,000-80,000	72,000
Associate	48,000-60,000	53,000
Senior Surveyor	40,000-50,000	44,000
Newly Qualified Surveyor	31,000-38,000	35,000
Graduate Surveyor	22,000-28,000	25,000

SCOTLAND	£ Range	£ Typical
Partner/Director	55,000-75,000	70,000
Associate	45,000-55,000	55,000
Senior Surveyor	35,000-45,000	42,000
Newly Qualified Surveyor	28,000-35,000	32,000
Graduate Surveyor	22,000-26,000	25,000

GENERAL PRACTICE SURVEYING

Development surveyors

LONDON	£ Range	£ Typical
Partner/Director	80,000-100,000	90,000
Associate	65,000-80,000	70,000
Senior Surveyor	50,000-60,000	54,000
Newly Qualified Surveyor	40,000-45,000	42,500
Graduate Surveyor	25,000-28,000	27,000

WALES	£ Range	£ Typical
Partner/Director	70,000-80,000	76,000
Associate	58,000-67,000	65,000
Senior Surveyor	46,000-58,000	48,000
Newly Qualified Surveyor	32,000-46,000	39,000
Graduate Surveyor	23,000-26,000	25,000

NORTH EAST ENGLAND	£ Range	£ Typical
Partner/Director	60,000-70,000	65,000
Associate	48,000-60,000	54,000
Senior Surveyor	42,000-52,000	47,000
Newly Qualified Surveyor	29,000-36,000	33,000
Graduate Surveyor	22,000-28,000	26,000

SOUTH EAST ENGLAND	£ Range	£ Typical
Partner/Director	70,000-90,000	85,000
Associate	58,000-65,000	60,000
Senior Surveyor	55,000-60,000	58,000
Newly Qualified Surveyor	40,000-45,000	42,000
Graduate Surveyor	23,000-25,500	24,500

WEST MIDLANDS	£ Range	£ Typical
Partner/Director	72,000-77,000	76,000
Associate	62,000-72,000	70,000
Senior Surveyor	44,000-52,000	48,000
Newly Qualified Surveyor	32,000-42,000	39,000
Graduate Surveyor	23,000-26,000	25,000

NORTH WEST ENGLAND	£ Range	£ Typical
Partner/Director	70,000-100,000	87,000
Associate	55,000-65,000	65,000
Senior Surveyor	40,000-55,000	50,000
Newly Qualified Surveyor	30,000-42,000	35,000
Graduate Surveyor	25,000-28,000	25,000

EAST OF ENGLAND	£ Range	£ Typical
Partner/Director	75,000-110,000	80,000
Associate	55,000-70,000	63,000
Senior Surveyor	40,000-55,000	52,000
Newly Qualified Surveyor	35,000-42,000	40,000
Graduate Surveyor	24,000-30,000	28,000

EAST MIDLANDS	£ Range	£ Typical
Partner/Director	72,000-77,000	76,000
Associate	62,000-72,000	70,000
Senior Surveyor	44,000-52,000	48,000
Newly Qualified Surveyor	32,000-42,000	39,000
Graduate Surveyor	23,000-26,000	25,000

NORTHERN IRELAND	£ Range	£ Typical
Partner/Director	60,000-75,000	70,000
Associate	45,000-55,000	52,000
Senior Surveyor	36,000-45,000	41,000
Newly Qualified Surveyor	27,000-35,000	30,500
Graduate Surveyor	18,500-22,000	20,000

SOUTH WEST ENGLAND	£ Range	£ Typical
Partner/Director	72,000-82,000	77,000
Associate	60,000-70,000	66,000
Senior Surveyor	47,000-60,000	49,000
Newly Qualified Surveyor	34,000-48,000	40,000
Graduate Surveyor	24,000-29,000	26,000

YORKSHIRE AND THE HUMBER	£ Range	£ Typical
Partner/Director	70,000-80,000	75,000
Associate	50,000-70,000	58,000
Senior Surveyor	42,000-60,000	48,000
Newly Qualified Surveyor	35,000-40,000	36,500
Graduate Surveyor	24,000-28,000	25,000

SCOTLAND	£ Range	£ Typical
Partner/Director	68,000-76,000	72,000
Associate	50,000-65,000	51,000
Senior Surveyor	39,000-50,000	41,000
Newly Qualified Surveyor	29,500-45,000	30,500
Graduate Surveyor	23,000-28,000	23,500

GENERAL PRACTICE SURVEYING

Valuation surveyors

LONDON	£ Range	£ Typical
Partner/Director	80,000-100,000	100,000
Associate	60,000-70,000	70,000
Senior Surveyor	46,000-55,000	52,000
Newly Qualified Surveyor	40,000-45,000	43,000
APC Surveyor	30,000-34,000	33,500
Graduate Surveyor	26,000-28,000	28,000

WALES	£ Range	£ Typical
Partner/Director	66,000-77,000	75,000
Associate	58,000-68,000	64,000
Senior Surveyor	45,000-57,000	47,000
Newly Qualified Surveyor	33,000-40,000	36,000
APC Surveyor	24,000-32,000	28,000
Graduate Surveyor	19,000-27,000	26,000

NORTH EAST ENGLAND	£ Range	£ Typical
Partner/Director	60,000-70,000	65,000
Associate	48,000-58,000	54,000
Senior Surveyor	43,000-53,000	51,000
Newly Qualified Surveyor	30,000-40,000	36,000
APC Surveyor	24,500-29,500	28,500
Graduate Surveyor	20,000-25,000	23,500

SOUTH EAST ENGLAND	£ Range	£ Typical
Partner/Director	75,000-90,000	85,000
Associate	65,000-75,000	70,000
Senior Surveyor	50,000-60,000	55,000
Newly Qualified Surveyor	40,000-45,000	43,000
APC Surveyor	30,000-36,000	35,000
Graduate Surveyor	23,000-26,000	24,500

WEST MIDLANDS	£ Range	£ Typical
Partner/Director	65,000-72,000	69,000
Associate	60,000-70,000	65,000
Senior Surveyor	43,000-50,000	47,000
Newly Qualified Surveyor	30,000-40,000	38,500
APC Surveyor	25,000-30,000	28,000
Graduate Surveyor	22,000-26,000	25,000

NORTH WEST ENGLAND	£ Range	£ Typical
Partner/Director	70,000-85,000	80,000
Associate	55,000-70,000	60,000
Senior Surveyor	40,000-50,000	45,000
Newly Qualified Surveyor	35,000-40,000	38,000
APC Surveyor	25,000-32,000	29,000
Graduate Surveyor	25,000-28,000	25,000

EAST OF ENGLAND	£ Range	£ Typical
Partner/Director	65,000-85,000	72,000
Associate	52,000-68,000	60,000
Senior Surveyor	40,000-55,000	48,000
Newly Qualified Surveyor	35,000-42,000	40,000
APC Surveyor	26,000-32,000	30,000
Graduate Surveyor	24,000-30,000	26,000

EAST MIDLANDS	£ Range	£ Typical
Partner/Director	70,000-77,000	70,000
Associate	60,000-70,000	65,000
Senior Surveyor	43,000-50,000	47,000
Newly Qualified Surveyor	30,000-40,000	39,000
APC Surveyor	25,000-30,000	28,000
Graduate Surveyor	22,000-26,000	25,000

NORTHERN IRELAND	£ Range	£ Typical
Partner/Director	60,000-75,000	70,000
Associate	45,000-55,000	50,000
Senior Surveyor	36,000-45,000	40,000
Newly Qualified Surveyor	27,000-35,000	32,000
APC Surveyor	22,000-28,000	26,000
Graduate Surveyor	18,000-22,000	20,000

SOUTH WEST ENGLAND	£ Range	£ Typical
Partner/Director	70,000-80,000	76,000
Associate	60,000-70,000	65,000
Senior Surveyor	45,000-60,000	49,000
Newly Qualified Surveyor	35,000-45,000	39,000
APC Surveyor	25,000-35,000	30,000
Graduate Surveyor	20,000-26,000	26,000

YORKSHIRE AND THE HUMBER	£ Range	£ Typical
Partner/Director	65,000-85,000	75,000
Associate	50,000-65,000	55,000
Senior Surveyor	40,000-50,000	48,000
Newly Qualified Surveyor	33,000-45,000	37,000
APC Surveyor	25,000-31,000	28,000
Graduate Surveyor	23,000-28,000	24,000

SCOTLAND	£ Range	£ Typical
Partner/Director	60,000-70,000	65,000
Associate	50,000-58,000	55,000
Senior Surveyor	40,000-48,000	45,000
Newly Qualified Surveyor	30,000-38,000	35,000
APC Surveyor	25,000-30,000	27,000
Graduate Surveyor	22,000-26,000	25,000

CONSTRUCTION & PROPERTY ARCHITECTURE

LONDON		
Architects	£ Range	£ Typical
Partner/Director	75,000-120,000	92,500
Associate	60,000-70,000	67,500
Architect (Senior)	52,500-65,000	57,500
Architect (5 years PQE)	47,500-52,500	49,000
Architect (Recently Qualified)	37,500-42,500	42,000
Architectural Assistant, Part II	28,000-34,000	33,000
Architectural Assistant, Part I	21,000-26,000	24,000

BIM	£ Range	£ Typical
BIM Manager	57,500-67,500	65,000
BIM Coordinator	37,500-47,500	42,500

Interior designers	£ Range	£ Typical
Interior Designer (Senior)	48,000-55,000	50,000
Interior Designer (Midweight)	38,000-42,000	42,000
Interior Designer (Junior)	22,000-26,000	24,000
Spaceplanner	28,000-37,000	32,000

Design Manager	£ Range	£ Typical
Design Manager	70,000-90,000	79,000
Design Coordinator	40,000-55,000	49,000

SOUTH EAST ENGLAND		
Architects	£ Range	£ Typical
Partner/Director	65,000-80,000	72,000
Associate	50,000-65,000	55,000
Architect (Senior)	45,000-55,000	50,000
Architect (5 years PQE)	40,000-50,000	45,000
Architect (Recently Qualified)	32,000-38,000	36,500
Architectural Assistant, Part II	26,000-35,000	30,000
Architectural Assistant, Part I	20,000-25,000	23,000

BIM	£ Range	£ Typical
BIM Manager	46,000-59,000	54,000
BIM Coordinator	40,000-52,000	49,000

Interior designers	£ Range	£ Typical
Interior Designer (Senior)	36,000-46,000	44,000
Interior Designer (Midweight)	29,000-36,000	35,500
Interior Designer (Junior)	18,500-24,000	22,000
Spaceplanner	27,500-37,000	33,000

Design Manager	£ Range	£ Typical
Design Manager	52,000-62,000	57,000
Design Coordinator	45,000-55,000	50,000

EAST OF ENGLAND		
Architects	£ Range	£ Typical
Partner/Director	65,000-80,000	72,000
Associate	50,000-65,000	55,000
Architect (Senior)	45,000-55,000	50,000
Architect (5 years PQE)	40,000-50,000	46,000
Architect (Recently Qualified)	32,000-38,000	36,500
Architectural Assistant, Part II	26,000-35,000	30,000
Architectural Assistant, Part I	20,000-25,000	23,000

BIM	£ Range	£ Typical
BIM Manager	46,000-59,000	54,000
BIM Coordinator	40,000-52,000	50,000

Interior designers	£ Range	£ Typical
Interior Designer (Senior)	37,000-47,000	46,000
Interior Designer (Midweight)	29,000-36,000	34,500
Interior Designer (Junior)	18,500-24,500	23,000
Spaceplanner	25,000-36,000	27,000

Design Manager	£ Range	£ Typical
Design Manager	53,000-63,000	61,000
Design Coordinator	45,000-55,000	47,000

SOUTH WEST ENGLAND		
Architects	£ Range	£ Typical
Partner/Director	62,000-72,000	69,000
Associate	46,000-56,000	52,000
Architect (Senior)	37,000-51,000	47,000
Architect (5 years PQE)	36,000-46,000	43,000
Architect (Recently Qualified)	28,000-37,000	36,000
Architectural Assistant, Part II	26,000-31,000	29,000
Architectural Assistant, Part I	18,500-25,500	22,500

BIM	£ Range	£ Typical
BIM Manager	47,000-57,000	53,000
BIM Coordinator	33,000-41,000	37,000

Interior designers	£ Range	£ Typical
Interior Designer (Senior)	34,000-44,000	37,500
Interior Designer (Midweight)	28,500-34,000	29,500
Interior Designer (Junior)	18,500-25,500	22,500
Spaceplanner	31,000-38,000	33,000

Design Manager	£ Range	£ Typical
Design Manager	52,000-67,000	61,000
Design Coordinator	42,000-52,000	48,000

WALES		
Architects	£ Range	£ Typical
Partner/Director	60,000-70,000	67,000
Associate	45,000-55,000	50,000
Architect (Senior)	36,000-50,000	45,000
Architect (5 years PQE)	35,000-45,000	43,000
Architect (Recently Qualified)	27,000-36,000	35,000
Architectural Assistant, Part II	25,000-30,000	28,000
Architectural Assistant, Part I	18,000-25,000	22,000

BIM	£ Range	£ Typical
BIM Manager	45,000-55,000	52,000
BIM Coordinator	32,000-40,000	36,000

Interior designers	£ Range	£ Typical
Interior Designer (Senior)	33,000-43,000	37,000
Interior Designer (Midweight)	28,000-33,000	29,000
Interior Designer (Junior)	18,000-25,000	22,000
Spaceplanner	30,000-37,000	32,000

Design Manager	£ Range	£ Typical
Design Manager	50,000-65,000	60,000
Design Coordinator	41,000-50,000	47,500

WEST MIDLANDS		
Architects	£ Range	£ Typical
Partner/Director	60,000-70,000	67,000
Associate	45,000-55,000	50,000
Architect (Senior)	36,000-50,000	45,000
Architect (5 years PQE)	35,000-45,000	43,000
Architect (Recently Qualified)	27,000-36,000	35,000
Architectural Assistant, Part II	25,000-30,000	28,000
Architectural Assistant, Part I	18,000-25,000	22,000

BIM	£ Range	£ Typical
BIM Manager	45,000-55,000	52,000
BIM Coordinator	32,000-40,000	36,000

Interior designers	£ Range	£ Typical
Interior Designer (Senior)	35,000-46,000	42,000
Interior Designer (Midweight)	25,000-33,000	30,000
Interior Designer (Junior)	18,000-25,000	22,000
Spaceplanner	20,000-28,000	27,000

Design Manager	£ Range	£ Typical
Design Manager	50,000-65,000	60,000
Design Coordinator	41,000-50,000	47,500

EAST MIDLANDS		
Architects	£ Range	£ Typical
Partner/Director	60,000-70,000	67,000
Associate	45,000-55,000	50,000
Architect (Senior)	36,000-50,000	45,000
Architect (5 years PQE)	35,000-45,000	43,000
Architect (Recently Qualified)	27,000-36,000	35,000
Architectural Assistant, Part II	25,000-30,000	28,000
Architectural Assistant, Part I	18,000-25,000	22,000

BIM	£ Range	£ Typical
BIM Manager	45,000-55,000	52,000
BIM Coordinator	32,000-40,000	36,000

Interior designers	£ Range	£ Typical
Interior Designer (Senior)	35,000-46,000	42,000
Interior Designer (Midweight)	25,000-33,000	30,000
Interior Designer (Junior)	18,000-25,000	22,000
Spaceplanner	20,000-28,000	27,000

Design Manager	£ Range	£ Typical
Design Manager	50,000-65,000	60,000
Design Coordinator	41,000-50,000	47,500

YORKSHIRE AND THE HUMBER		
Architects	£ Range	£ Typical
Partner/Director	65,000-90,000	87,000
Associate	46,000-60,000	54,000
Architect (Senior)	39,000-51,000	46,000
Architect (5 years PQE)	36,000-45,000	38,500
Architect (Recently Qualified)	30,000-36,000	32,000
Architectural Assistant, Part II	27,000-33,000	32,500
Architectural Assistant, Part I	19,000-22,000	21,000

BIM	£ Range	£ Typical
BIM Manager	45,000-60,000	53,000
BIM Coordinator	35,000-44,000	40,000

Interior designers	£ Range	£ Typical
Interior Designer (Senior)	39,000-56,000	45,500
Interior Designer (Midweight)	29,000-37,000	32,000
Interior Designer (Junior)	18,000-25,000	22,500
Spaceplanner	21,000-35,000	27,500

Design Manager	£ Range	£ Typical
Design Manager	45,000-70,000	64,500
Design Coordinator	39,000-50,000	44,000

CONSTRUCTION & PROPERTY ARCHITECTURE

NORTH EAST ENGLAND

Architects	£ Range	£ Typical
Partner/Director	60,000-80,000	74,000
Associate	45,000-59,000	50,000
Architect (Senior)	40,000-52,000	45,000
Architect (5 years PQE)	35,000-44,000	37,000
Architect (Recently Qualified)	30,000-36,000	32,000
Architectural Assistant, Part II	26,000-31,000	27,500
Architectural Assistant, Part I	19,000-23,000	21,000

BIM	£ Range	£ Typical
BIM Manager	45,000-60,000	51,000
BIM Coordinator	35,000-44,000	38,000

Interior designers	£ Range	£ Typical
Interior Designer (Senior)	38,000-55,000	42,000
Interior Designer (Midweight)	28,000-36,000	32,000
Interior Designer (Junior)	18,000-25,000	22,250
Spaceplanner	20,000-35,000	27,500

Design Manager	£ Range	£ Typical
Design Manager	45,000-70,000	62,500
Design Coordinator	39,000-50,000	44,000

NORTH WEST ENGLAND

Architects	£ Range	£ Typical
Partner/Director	65,000-90,000	80,000
Associate	45,000-58,000	53,000
Architect (Senior)	40,000-55,000	47,000
Architect (5 years PQE)	36,000-45,000	41,000
Architect (Recently Qualified)	30,000-36,000	34,000
Architectural Assistant, Part II	27,000-32,000	28,500
Architectural Assistant, Part I	20,000-24,000	23,000

BIM	£ Range	£ Typical
BIM Manager	45,000-60,000	55,000
BIM Coordinator	35,000-45,000	42,500

Interior designers	£ Range	£ Typical
Interior Designer (Senior)	36,000-55,000	45,000
Interior Designer (Midweight)	28,000-35,000	32,000
Interior Designer (Junior)	20,000-28,000	24,000
Spaceplanner	20,000-35,000	29,000

Design Manager	£ Range	£ Typical
Design Manager	45,000-70,000	65,000
Design Coordinator	38,000-50,000	45,000

NORTHERN IRELAND

Architects	£ Range	£ Typical
Partner/Director	52,000-65,000	55,000
Associate	45,000-50,000	46,000
Architect (Senior)	38,000-46,000	45,000
Architect (5 years PQE)	33,000-45,000	37,000
Architect (Recently Qualified)	27,000-35,000	31,000
Architectural Assistant, Part II	22,000-26,000	24,000
Architectural Assistant, Part I	18,000-21,000	20,000

BIM	£ Range	£ Typical
BIM Manager	40,000-50,000	46,000
BIM Coordinator	26,000-40,000	33,000

Interior designers	£ Range	£ Typical
Interior Designer (Senior)	27,000-37,000	33,000
Interior Designer (Midweight)	24,000-28,000	27,000
Interior Designer (Junior)	18,000-23,000	22,000
Spaceplanner	18,000-22,000	20,000

Design Manager	£ Range	£ Typical
Design Manager	46,000-60,000	53,000
Design Coordinator	30,000-45,000	40,000

SCOTLAND

Architects	£ Range	£ Typical
Partner/Director	55,000-95,000	75,000
Associate	42,000-55,000	50,000
Architect (Senior)	38,000-48,000	44,000
Architect (5 years PQE)	35,000-40,000	38,000
Architect (Recently Qualified)	28,000-34,000	32,500
Architectural Assistant, Part II	20,000-28,000	25,000
Architectural Assistant, Part I	18,000-20,000	18,000

BIM	£ Range	£ Typical
BIM Manager	45,000-55,000	50,000
BIM Coordinator	35,000-45,000	40,000

Interior designers	£ Range	£ Typical
Interior Designer (Senior)	34,000-40,000	38,000
Interior Designer (Midweight)	26,000-34,000	31,000
Interior Designer (Junior)	18,000-26,000	22,000
Spaceplanner	20,000-35,000	30,000

Design Manager	£ Range	£ Typical
Design Manager	45,000-65,000	60,000
Design Coordinator	35,000-45,000	45,000

ARCHITECTURAL TECHNOLOGY

LONDON	£ Range	£ Typical
Partner/Director	75,000-120,000	93,000
Associate	60,000-70,000	65,000
Senior Technologist	50,000-57,500	55,000
Technologist	40,000-50,000	45,000
Technologist (Recently Qualified)	30,000-37,500	35,000

SOUTH EAST ENGLAND	£ Range	£ Typical
Partner/Director	60,000-80,000	70,000
Associate	50,000-60,000	55,000
Senior Technologist	45,000-55,000	50,000
Technologist	38,000-48,000	42,000
Technologist (Recently Qualified)	28,000-35,000	33,000

EAST OF ENGLAND	£ Range	£ Typical
Partner/Director	60,000-80,000	70,000
Associate	50,000-60,000	55,000
Senior Technologist	45,000-55,000	50,000
Technologist	38,000-48,000	42,000
Technologist (Recently Qualified)	28,000-35,000	33,000

SOUTH WEST ENGLAND	£ Range	£ Typical
Partner/Director	45,000-50,000	46,500
Associate	41,000-46,000	43,500
Senior Technologist	34,000-41,000	38,000
Technologist	25,000-34,000	30,000
Technologist (Recently Qualified)	18,500-25,500	22,750

WALES	£ Range	£ Typical
Partner/Director	46,000-50,000	47,500
Associate	41,000-47,000	42,500
Senior Technologist	37,000-45,000	39,000
Technologist	26,000-36,000	28,500
Technologist (Recently Qualified)	18,500-23,500	22,500

WEST MIDLANDS	£ Range	£ Typical
Partner/Director	60,000-70,000	62,000
Associate	45,000-60,000	50,000
Senior Technologist	35,000-45,000	40,000
Technologist	25,000-35,000	33,000
Technologist (Recently Qualified)	22,000-25,000	23,000

EAST MIDLANDS	£ Range	£ Typical
Partner/Director	60,000-70,000	62,000
Associate	45,000-60,000	50,000
Senior Technologist	35,000-45,000	40,000
Technologist	25,000-35,000	33,000
Technologist (Recently Qualified)	22,000-25,000	23,000

YORKSHIRE AND THE HUMBER	£ Range	£ Typical
Partner/Director	60,000-80,000	72,000
Associate	45,000-55,000	52,000
Senior Technologist	35,000-50,000	47,000
Technologist	24,000-37,000	34,000
Technologist (Recently Qualified)	20,000-25,000	21,000

NORTH EAST ENGLAND	£ Range	£ Typical
Partner/Director	60,000-80,000	72,000
Associate	45,000-55,000	51,250
Senior Technologist	35,000-50,000	46,500
Technologist	24,000-37,000	33,000
Technologist (Recently Qualified)	22,000-26,000	22,000

NORTH WEST ENGLAND	£ Range	£ Typical
Partner/Director	60,000-80,000	75,000
Associate	45,000-55,000	52,000
Senior Technologist	35,000-50,000	47,000
Technologist	24,000-38,000	35,000
Technologist (Recently Qualified)	22,000-26,000	24,000

NORTHERN IRELAND	£ Range	£ Typical
Partner/Director	45,000-55,000	46,000
Associate	38,000-46,000	42,500
Senior Technologist	34,000-42,000	38,500
Technologist	26,000-36,000	28,500
Technologist (Recently Qualified)	22,000-26,000	24,000

SCOTLAND	£ Range	£ Typical
Partner/Director	60,000-75,000	65,000
Associate	45,000-55,000	50,000
Senior Technologist	36,000-46,000	44,000
Technologist	26,000-36,000	34,000
Technologist (Recently Qualified)	18,000-26,000	24,000

TOWN PLANNING

LONDON	£ Range	£ Typical
Partner/Director	80,000-100,000	90,000
Associate	50,000-72,000	65,000
Planner	35,000-50,000	45,000
Assistant Planner	25,000-32,000	28,000

SOUTH EAST ENGLAND	£ Range	£ Typical
Partner/Director	65,000-90,000	77,000
Associate	45,000-65,000	55,000
Planner	30,000-45,000	38,000
Assistant Planner	22,000-30,000	25,000

EAST OF ENGLAND	£ Range	£ Typical
Partner/Director	65,000-85,000	77,000
Associate	50,000-70,000	65,000
Planner	35,000-45,000	42,000
Assistant Planner	22,000-30,000	28,000

SOUTH WEST ENGLAND	£ Range	£ Typical
Partner/Director	45,000-55,000	49,000
Associate	36,000-42,000	37,500
Planner	28,000-33,000	30,000
Assistant Planner	22,000-26,000	22,750

WALES	£ Range	£ Typical
Partner/Director	48,000-58,000	50,000
Associate	36,000-42,000	37,500
Planner	26,000-29,000	27,500
Assistant Planner	19,000-23,000	20,000

WEST MIDLANDS	£ Range	£ Typical
Partner/Director	55,000-65,000	62,000
Associate	45,000-51,000	47,000
Planner	28,000-36,000	34,000
Assistant Planner	18,000-25,000	23,000

EAST MIDLANDS	£ Range	£ Typical
Partner/Director	55,000-65,000	62,000
Associate	45,000-51,000	47,000
Planner	28,000-36,000	34,000
Assistant Planner	18,000-25,000	23,000

YORKSHIRE AND THE HUMBER	£ Range	£ Typical
Partner/Director	55,000-80,000	69,000
Associate	40,000-55,000	49,000
Planner	28,000-38,000	33,000
Assistant Planner	22,000-28,000	24,000

NORTH EAST ENGLAND	£ Range	£ Typical
Partner/Director	53,000-78,000	68,000
Associate	38,000-53,000	48,000
Planner	25,000-36,000	32,000
Assistant Planner	20,000-27,000	23,000

NORTH WEST ENGLAND	£ Range	£ Typical
Partner/Director	55,000-80,000	70,000
Associate	40,000-55,000	50,000
Planner	28,000-38,000	34,000
Assistant Planner	22,000-28,000	24,000

NORTHERN IRELAND	£ Range	£ Typical
Partner/Director	42,000-52,000	49,000
Associate	36,000-43,000	40,000
Planner	26,000-38,000	33,000
Assistant Planner	18,000-23,000	22,000

SCOTLAND	£ Range	£ Typical
Partner/Director	50,000-60,000	55,000
Associate	40,000-50,000	45,000
Planner	30,000-40,000	35,000
Assistant Planner	20,000-30,000	25,000

CIVIL & STRUCTURAL ENGINEERING

Civil engineers

LONDON	£ Range	£ Typical
Associate Engineer	60,000-75,000	68,000
Senior Engineer	45,000-65,000	55,000
Engineer	35,000-45,000	42,000
Graduate Engineer	26,000-32,000	30,000

WALES	£ Range	£ Typical
Associate Engineer	52,000-62,000	57,000
Senior Engineer	37,000-47,000	41,500
Engineer	31,000-36,000	33,500
Graduate Engineer	23,000-26,000	25,000

NORTH EAST ENGLAND	£ Range	£ Typical
Associate Engineer	60,000-70,000	65,000
Senior Engineer	45,000-55,000	48,000
Engineer	30,000-45,000	40,000
Graduate Engineer	24,000-30,000	27,000

SOUTH EAST ENGLAND	£ Range	£ Typical
Associate Engineer	55,000-65,000	60,000
Senior Engineer	40,000-55,000	48,000
Engineer	36,000-44,000	42,000
Graduate Engineer	25,000-28,000	27,500

WEST MIDLANDS	£ Range	£ Typical
Associate Engineer	55,000-75,000	67,500
Senior Engineer	45,000-60,000	52,000
Engineer	33,000-47,500	43,000
Graduate Engineer	25,500-28,500	28,000

NORTH WEST ENGLAND	£ Range	£ Typical
Associate Engineer	60,000-70,000	65,000
Senior Engineer	45,000-55,000	50,000
Engineer	30,000-45,000	40,000
Graduate Engineer	24,000-30,000	27,000

EAST OF ENGLAND	£ Range	£ Typical
Associate Engineer	55,000-70,000	65,000
Senior Engineer	45,000-60,000	52,000
Engineer	35,000-50,000	42,000
Graduate Engineer	24,000-32,000	28,000

EAST MIDLANDS	£ Range	£ Typical
Associate Engineer	55,000-75,000	67,500
Senior Engineer	45,000-60,000	52,000
Engineer	33,000-47,500	43,000
Graduate Engineer	25,500-28,500	28,000

NORTHERN IRELAND	£ Range	£ Typical
Associate Engineer	45,000-60,000	55,000
Senior Engineer	37,000-45,000	39,000
Engineer	28,000-37,000	35,000
Graduate Engineer	24,000-28,000	27,000

SOUTH WEST ENGLAND	£ Range	£ Typical
Associate Engineer	58,000-68,000	62,500
Senior Engineer	47,000-52,000	49,500
Engineer	29,000-37,000	35,000
Graduate Engineer	24,000-29,000	26,000

YORKSHIRE AND THE HUMBER	£ Range	£ Typical
Associate Engineer	60,000-70,000	65,000
Senior Engineer	40,000-55,000	50,000
Engineer	32,000-48,000	40,000
Graduate Engineer	24,000-30,000	27,000

SCOTLAND	£ Range	£ Typical
Associate Engineer	53,000-66,000	61,000
Senior Engineer	41,000-51,000	47,000
Engineer	31,000-39,000	36,500
Graduate Engineer	22,500-29,500	28,250

CIVIL & STRUCTURAL ENGINEERING

Structural engineers

LONDON	£ Range	£ Typical
Associate Engineer	60,000-80,000	72,500
Senior Engineer	45,000-65,000	55,000
Engineer	32,000-50,000	45,000
Graduate Engineer	25,000-35,000	32,000

WALES	£ Range	£ Typical
Associate Engineer	52,000-62,000	58,000
Senior Engineer	36,000-46,000	39,000
Engineer	31,000-36,000	34,500
Graduate Engineer	22,500-28,000	26,000

NORTH EAST ENGLAND	£ Range	£ Typical
Associate Engineer	60,000-70,000	65,000
Senior Engineer	45,000-60,000	46,000
Engineer	30,000-45,000	40,000
Graduate Engineer	24,000-30,000	27,000

SOUTH EAST ENGLAND	£ Range	£ Typical
Associate Engineer	58,000-68,000	64,000
Senior Engineer	43,000-55,000	49,000
Engineer	35,000-45,000	42,000
Graduate Engineer	24,000-30,000	29,000

WEST MIDLANDS	£ Range	£ Typical
Associate Engineer	55,000-75,000	68,000
Senior Engineer	45,000-60,000	50,000
Engineer	34,000-48,000	45,000
Graduate Engineer	26,000-30,000	28,000

NORTH WEST ENGLAND	£ Range	£ Typical
Associate Engineer	60,000-70,000	65,000
Senior Engineer	45,000-60,000	47,000
Engineer	30,000-45,000	40,000
Graduate Engineer	24,000-30,000	27,000

EAST OF ENGLAND	£ Range	£ Typical
Associate Engineer	55,000-70,000	65,000
Senior Engineer	45,000-60,000	52,500
Engineer	32,000-47,000	42,500
Graduate Engineer	24,000-35,000	30,000

EAST MIDLANDS	£ Range	£ Typical
Associate Engineer	55,000-75,000	68,000
Senior Engineer	45,000-60,000	50,000
Engineer	34,000-48,000	45,000
Graduate Engineer	26,000-30,000	28,000

NORTHERN IRELAND	£ Range	£ Typical
Associate Engineer	49,000-60,000	55,000
Senior Engineer	39,000-49,000	45,000
Engineer	30,000-39,000	35,000
Graduate Engineer	25,000-30,000	27,000

SOUTH WEST ENGLAND	£ Range	£ Typical
Associate Engineer	56,000-66,000	63,000
Senior Engineer	37,000-52,000	45,000
Engineer	29,000-37,000	35,000
Graduate Engineer	23,500-29,000	27,000

YORKSHIRE AND THE HUMBER	£ Range	£ Typical
Associate Engineer	60,000-70,000	65,000
Senior Engineer	45,000-60,000	46,000
Engineer	30,000-45,000	40,000
Graduate Engineer	24,000-30,000	27,000

SCOTLAND	£ Range	£ Typical
Associate Engineer	54,000-72,000	62,000
Senior Engineer	40,000-50,000	48,000
Engineer	28,000-39,000	36,500
Graduate Engineer	22,000-30,000	29,000

CIVIL & STRUCTURAL ENGINEERING

CAD technicians

LONDON	£ Range	£ Typical
BIM/Revit Manager	50,000-65,000	60,000
Senior CAD/Revit Technician	40,000-50,000	47,500
CAD/Revit Technician	28,000-40,000	38,500

WALES	£ Range	£ Typical
BIM/Revit Manager	39,000-46,000	44,500
Senior CAD/Revit Technician	33,000-39,000	37,500
CAD/Revit Technician	26,000-31,000	28,500

NORTH EAST ENGLAND	£ Range	£ Typical
BIM/Revit Manager	40,000-55,000	48,000
Senior CAD/Revit Technician	38,000-50,000	45,000
CAD/Revit Technician	30,000-40,000	36,000

SOUTH EAST ENGLAND	£ Range	£ Typical
BIM/Revit Manager	45,000-52,000	48,000
Senior CAD/Revit Technician	38,000-48,000	43,000
CAD/Revit Technician	25,000-40,000	35,000

WEST MIDLANDS	£ Range	£ Typical
BIM/Revit Manager	40,000-55,000	50,000
Senior CAD/Revit Technician	40,000-48,000	45,000
CAD/Revit Technician	30,000-45,000	36,000

NORTH WEST ENGLAND	£ Range	£ Typical
BIM/Revit Manager	40,000-55,000	48,000
Senior CAD/Revit Technician	40,000-55,000	45,000
CAD/Revit Technician	30,000-35,000	32,500

EAST OF ENGLAND	£ Range	£ Typical
BIM/Revit Manager	45,000-50,000	48,000
Senior CAD/Revit Technician	38,000-48,000	43,000
CAD/Revit Technician	25,000-40,000	35,000

EAST MIDLANDS	£ Range	£ Typical
BIM/Revit Manager	40,000-55,000	50,000
Senior CAD/Revit Technician	40,000-48,000	45,000
CAD/Revit Technician	30,000-45,000	36,000

NORTHERN IRELAND	£ Range	£ Typical
BIM/Revit Manager	35,000-42,000	38,000
Senior CAD/Revit Technician	28,000-35,000	32,000
CAD/Revit Technician	24,000-32,000	28,000

SOUTH WEST ENGLAND	£ Range	£ Typical
BIM/Revit Manager	42,000-55,000	50,000
Senior CAD/Revit Technician	36,000-46,000	43,000
CAD/Revit Technician	25,000-36,000	31,000

YORKSHIRE AND THE HUMBER	£ Range	£ Typical
BIM/Revit Manager	40,000-55,000	48,000
Senior CAD/Revit Technician	38,000-50,000	45,000
CAD/Revit Technician	30,000-40,000	36,000

SCOTLAND	£ Range	£ Typical
BIM/Revit Manager	42,000-52,000	47,500
Senior CAD/Revit Technician	36,000-46,000	42,000
CAD/Revit Technician	23,000-36,000	31,500

FACILITIES MANAGEMENT

LONDON	£ Range	£ Typical
Facilities Director	90,000-125,000	100,000
Facilities Manager	45,000-60,000	55,000
Facilities Assistant	28,000-32,000	30,000
Technical Services Manager	55,000-65,000	60,000
Technical Services Supervisor	40,000-50,000	47,000
Contract Manager	55,000-65,000	60,000
Electrical/Mechanical Engineer	36,000-45,000	40,000

WALES	£ Range	£ Typical
Facilities Director	61,000-80,000	70,000
Facilities Manager	40,000-45,000	43,000
Facilities Assistant	24,000-27,000	25,000
Technical Services Manager	37,000-44,000	43,000
Technical Services Supervisor	32,000-38,000	36,000
Contract Manager	43,000-46,000	46,000
Electrical/Mechanical Engineer	33,000-36,000	36,000

NORTH EAST ENGLAND	£ Range	£ Typical
Facilities Director	58,000-68,000	64,000
Facilities Manager	36,000-46,000	40,000
Facilities Assistant	20,500-26,000	24,500
Technical Services Manager	33,000-46,000	39,000
Technical Services Supervisor	27,500-36,000	31,000
Contract Manager	41,000-51,000	47,000
Electrical/Mechanical Engineer	31,000-38,000	37,000

SOUTH EAST ENGLAND	£ Range	£ Typical
Facilities Director	72,000-82,000	80,000
Facilities Manager	38,000-44,000	40,000
Facilities Assistant	25,000-30,000	28,000
Technical Services Manager	47,000-57,000	55,000
Technical Services Supervisor	38,000-45,000	42,500
Contract Manager	52,000-60,000	57,500
Electrical/Mechanical Engineer	32,000-40,000	38,000

WEST MIDLANDS	£ Range	£ Typical
Facilities Director	55,000-75,000	67,000
Facilities Manager	32,000-44,000	40,000
Facilities Assistant	19,000-26,000	25,000
Technical Services Manager	43,000-46,000	43,000
Technical Services Supervisor	36,000-37,000	36,000
Contract Manager	39,000-49,000	47,500
Electrical/Mechanical Engineer	28,000-37,000	36,000

NORTH WEST ENGLAND	£ Range	£ Typical
Facilities Director	75,000-150,000	85,000
Facilities Manager	40,000-75,000	50,000
Facilities Assistant	20,000-30,000	25,500
Technical Services Manager	40,000-65,000	55,000
Technical Services Supervisor	35,000-50,000	45,000
Contract Manager	40,000-55,000	52,500
Electrical/Mechanical Engineer	32,500-45,000	40,000

EAST OF ENGLAND	£ Range	£ Typical
Facilities Director	62,000-82,000	73,000
Facilities Manager	36,000-51,000	44,500
Facilities Assistant	21,000-29,000	27,000
Technical Services Manager	42,000-52,000	47,000
Technical Services Supervisor	32,000-40,000	37,500
Contract Manager	37,000-47,000	44,500
Electrical/Mechanical Engineer	30,000-38,000	36,000

EAST MIDLANDS	£ Range	£ Typical
Facilities Director	55,000-75,000	67,000
Facilities Manager	32,000-44,000	40,000
Facilities Assistant	19,000-26,000	25,000
Technical Services Manager	43,000-46,000	43,000
Technical Services Supervisor	36,000-37,000	36,000
Contract Manager	39,000-49,000	47,500
Electrical/Mechanical Engineer	28,000-37,000	36,000

NORTHERN IRELAND	£ Range	£ Typical
Facilities Director	60,000-75,000	62,000
Facilities Manager	36,000-44,000	40,000
Facilities Assistant	21,000-27,000	22,500
Technical Services Manager	36,000-45,000	40,000
Technical Services Supervisor	32,000-38,000	36,000
Contract Manager	36,000-45,000	40,000
Electrical/Mechanical Engineer	32,000-38,000	34,500

SOUTH WEST ENGLAND	£ Range	£ Typical
Facilities Director	72,000-81,000	75,000
Facilities Manager	39,000-45,000	44,000
Facilities Assistant	23,000-28,000	27,000
Technical Services Manager	38,000-45,000	44,000
Technical Services Supervisor	33,000-39,000	37,000
Contract Manager	44,000-47,000	47,000
Electrical/Mechanical Engineer	34,000-37,000	37,000

YORKSHIRE AND THE HUMBER	£ Range	£ Typical
Facilities Director	62,000-72,000	65,000
Facilities Manager	36,000-46,000	41,000
Facilities Assistant	19,500-29,000	27,500
Technical Services Manager	36,000-46,000	44,000
Technical Services Supervisor	31,000-36,000	34,000
Contract Manager	41,000-56,000	47,000
Electrical/Mechanical Engineer	34,000-39,000	38,000

SCOTLAND	£ Range	£ Typical
Facilities Director	56,000-66,000	61,000
Facilities Manager	35,000-45,000	40,500
Facilities Assistant	25,000-29,000	25,500
Technical Services Manager	36,000-43,000	41,500
Technical Services Supervisor	31,000-38,000	35,500
Contract Manager	39,000-46,000	44,500
Electrical/Mechanical Engineer	29,000-37,000	35,500

BUILDING SERVICES

Consulting

LONDON	£ Range	£ Typical
Director	90,000-140,000	105,000
Associate	65,000-80,000	78,000
Senior Design Engineer (M&E)	50,000-68,000	60,000
Intermediate Design Engineer (M&E)	38,000-50,000	45,000
Junior Design Engineer (M&E)	30,000-38,000	35,000
Revit/BIM Technician	40,000-65,000	55,000
CAD Technician	32,000-45,000	38,000
Professional Quantity Surveyor	55,000-85,000	75,000
Sustainability Consultant	45,000-75,000	60,000

SOUTH EAST ENGLAND	£ Range	£ Typical
Director	72,000-87,000	80,000
Associate	62,000-72,000	69,000
Senior Design Engineer (M&E)	53,000-58,000	58,000
Intermediate Design Engineer (M&E)	35,000-40,000	39,000
Junior Design Engineer (M&E)	23,000-33,000	32,500
Revit/BIM Technician	44,000-56,000	50,000
CAD Technician	31,000-36,000	34,000
Professional Quantity Surveyor	59,000-78,000	75,000
Sustainability Consultant	43,000-48,000	46,500

EAST OF ENGLAND	£ Range	£ Typical
Director	72,000-82,000	78,000
Associate	56,000-69,000	62,000
Senior Design Engineer (M&E)	46,000-61,000	53,000
Intermediate Design Engineer (M&E)	38,000-51,000	44,000
Junior Design Engineer (M&E)	23,000-31,000	28,000
Revit/BIM Technician	31,000-46,000	40,000
CAD Technician	29,000-39,000	33,000
Professional Quantity Surveyor	52,000-62,000	59,000
Sustainability Consultant	43,000-61,000	53,000

SOUTH WEST ENGLAND	£ Range	£ Typical
Director	70,000-79,000	75,000
Associate	68,000-73,000	70,000
Senior Design Engineer (M&E)	51,000-58,000	55,000
Intermediate Design Engineer (M&E)	47,000-55,000	50,000
Junior Design Engineer (M&E)	31,000-38,000	35,000
Revit/BIM Technician	41,000-49,000	44,000
CAD Technician	30,000-38,000	33,000
Professional Quantity Surveyor	57,000-65,000	60,000
Sustainability Consultant	46,000-54,000	50,000

WALES	£ Range	£ Typical
Director	70,000-79,000	73,000
Associate	68,000-73,000	68,000
Senior Design Engineer (M&E)	51,000-58,000	53,000
Intermediate Design Engineer (M&E)	47,000-55,000	47,000
Junior Design Engineer (M&E)	31,000-38,000	34,000
Revit/BIM Technician	41,000-49,000	42,000
CAD Technician	30,000-38,000	31,000
Professional Quantity Surveyor	57,000-65,000	57,000
Sustainability Consultant	46,000-54,000	48,000

WEST MIDLANDS	£ Range	£ Typical
Director	65,000-85,000	80,000
Associate	60,000-75,000	70,000
Senior Design Engineer (M&E)	45,000-58,000	53,000
Intermediate Design Engineer (M&E)	32,000-41,000	39,000
Junior Design Engineer (M&E)	26,000-32,000	30,000
Revit/BIM Technician	35,000-45,000	40,000
CAD Technician	26,000-35,000	31,000
Professional Quantity Surveyor	45,000-60,000	53,000
Sustainability Consultant	42,000-55,000	48,000

EAST MIDLANDS	£ Range	£ Typical
Director	70,000-85,000	80,000
Associate	60,000-75,000	70,000
Senior Design Engineer (M&E)	45,000-58,000	55,000
Intermediate Design Engineer (M&E)	32,000-40,000	40,000
Junior Design Engineer (M&E)	26,000-32,000	30,000
Revit/BIM Technician	35,000-45,000	40,000
CAD Technician	26,000-35,000	30,000
Professional Quantity Surveyor	50,000-60,000	55,000
Sustainability Consultant	42,000-55,000	48,000

YORKSHIRE AND THE HUMBER	£ Range	£ Typical
Director	46,000-60,000	56,000
Associate	46,000-55,000	54,000
Senior Design Engineer (M&E)	40,000-49,000	47,500
Intermediate Design Engineer (M&E)	23,500-29,000	28,500
Junior Design Engineer (M&E)	19,000-25,000	23,250
Revit/BIM Technician	31,000-41,000	39,500
CAD Technician	24,000-30,000	29,500
Professional Quantity Surveyor	38,000-50,000	48,000
Sustainability Consultant	42,000-50,000	48,000

NORTH EAST ENGLAND	£ Range	£ Typical
Director	46,000-59,000	55,500
Associate	43,000-50,000	49,000
Senior Design Engineer (M&E)	41,000-50,000	48,500
Intermediate Design Engineer (M&E)	28,000-38,000	33,000
Junior Design Engineer (M&E)	19,000-24,000	23,250
Revit/BIM Technician	31,000-40,000	38,500
CAD Technician	22,000-28,000	27,500
Professional Quantity Surveyor	38,000-48,000	45,000
Sustainability Consultant	38,000-47,000	45,000

NORTH WEST ENGLAND	£ Range	£ Typical
Director	65,000-80,000	72,000
Associate	55,000-68,000	63,000
Senior Design Engineer (M&E)	45,000-58,000	55,000
Intermediate Design Engineer (M&E)	30,000-40,000	38,000
Junior Design Engineer (M&E)	18,000-28,000	27,000
Revit/BIM Technician	35,000-45,000	44,000
CAD Technician	25,000-38,000	30,000
Professional Quantity Surveyor	40,000-58,000	50,000
Sustainability Consultant	45,000-55,000	50,000

NORTHERN IRELAND	£ Range	£ Typical
Director	70,000-75,000	70,000
Associate	55,000-60,000	58,000
Senior Design Engineer (M&E)	45,000-55,000	49,000
Intermediate Design Engineer (M&E)	32,000-38,000	35,000
Junior Design Engineer (M&E)	24,000-30,000	27,000
Revit/BIM Technician	32,000-40,000	36,000
CAD Technician	22,000-30,000	27,000
Professional Quantity Surveyor	40,000-50,000	45,000
Sustainability Consultant	40,000-50,000	43,000

SCOTLAND	£ Range	£ Typical
Director	60,000-85,000	70,000
Associate	55,000-65,000	60,000
Senior Design Engineer (M&E)	40,000-55,000	50,000
Intermediate Design Engineer (M&E)	30,000-43,000	38,000
Junior Design Engineer (M&E)	24,000-32,000	30,000
Revit/BIM Technician	25,000-40,000	36,000
CAD Technician	23,000-31,000	28,000
Professional Quantity Surveyor	35,000-50,000	41,000
Sustainability Consultant	35,000-50,000	46,000

BUILDING SERVICES

Contractors

LONDON	£ Range	£ Typical
Director	85,000-130,000	105,000
Senior Contracts Manager	65,000-90,000	78,000
Contract Quantity Surveyor	60,000-85,000	70,000
Project Manager	65,000-85,000	75,000
Project Engineer	50,000-65,000	60,000
Estimator	50,000-70,000	62,500
CAD Technician	36,000-55,000	48,000

WALES	£ Range	£ Typical
Director	68,000-77,000	73,000
Senior Contracts Manager	56,000-63,000	60,000
Contract Quantity Surveyor	50,000-62,000	53,000
Project Manager	45,000-55,000	45,000
Project Engineer	40,000-44,000	42,000
Estimator	45,000-60,000	48,000
CAD Technician	30,000-36,000	32,000

NORTH EAST ENGLAND	£ Range	£ Typical
Director	52,000-64,000	58,500
Senior Contracts Manager	39,000-51,000	48,000
Contract Quantity Surveyor	43,000-53,000	48,500
Project Manager	45,000-55,000	49,000
Project Engineer	33,000-43,000	38,500
Estimator	36,000-46,000	43,000
CAD Technician	23,500-29,500	29,000

SOUTH EAST ENGLAND	£ Range	£ Typical
Director	72,000-82,000	80,000
Senior Contracts Manager	67,000-74,000	73,000
Contract Quantity Surveyor	62,000-72,000	67,500
Project Manager	62,000-72,000	69,000
Project Engineer	48,000-56,000	54,000
Estimator	62,000-72,000	67,000
CAD Technician	37,000-44,000	43,000

WEST MIDLANDS	£ Range	£ Typical
Director	65,000-85,000	76,000
Senior Contracts Manager	52,000-70,000	61,000
Contract Quantity Surveyor	45,000-62,000	54,000
Project Manager	45,000-60,000	55,000
Project Engineer	33,000-48,000	43,000
Estimator	40,000-60,000	48,000
CAD Technician	26,000-34,000	31,000

NORTH WEST ENGLAND	£ Range	£ Typical
Director	68,000-85,000	75,000
Senior Contracts Manager	50,000-68,000	58,000
Contract Quantity Surveyor	40,000-55,000	47,000
Project Manager	40,000-50,000	50,000
Project Engineer	35,000-45,000	43,000
Estimator	38,000-45,000	44,000
CAD Technician	25,000-35,000	31,000

EAST OF ENGLAND	£ Range	£ Typical
Director	72,000-85,000	74,000
Senior Contracts Manager	56,000-70,000	65,000
Contract Quantity Surveyor	48,000-62,000	55,000
Project Manager	46,000-62,000	56,000
Project Engineer	46,000-56,000	51,000
Estimator	52,000-62,000	56,000
CAD Technician	27,000-33,000	30,000

EAST MIDLANDS	£ Range	£ Typical
Director	65,000-85,000	75,000
Senior Contracts Manager	52,000-65,000	60,000
Contract Quantity Surveyor	50,000-65,000	60,000
Project Manager	50,000-60,000	55,000
Project Engineer	38,000-45,000	42,000
Estimator	45,000-55,000	50,000
CAD Technician	27,000-35,000	33,000

NORTHERN IRELAND	£ Range	£ Typical
Director	75,000-90,000	80,000
Senior Contracts Manager	55,000-65,000	60,000
Contract Quantity Surveyor	50,000-60,000	52,000
Project Manager	42,000-50,000	44,000
Project Engineer	35,000-40,000	37,000
Estimator	40,000-50,000	45,000
CAD Technician	35,000-45,000	40,000

SOUTH WEST ENGLAND	£ Range	£ Typical
Director	70,000-80,000	75,000
Senior Contracts Manager	58,000-65,000	63,000
Contract Quantity Surveyor	56,000-64,000	58,000
Project Manager	52,000-57,000	54,000
Project Engineer	43,000-47,000	45,000
Estimator	50,000-60,000	53,000
CAD Technician	33,000-37,000	34,000

YORKSHIRE AND THE HUMBER	£ Range	£ Typical
Director	62,000-68,000	63,000
Senior Contracts Manager	42,000-52,000	45,000
Contract Quantity Surveyor	42,000-52,000	46,000
Project Manager	45,000-55,000	53,000
Project Engineer	36,000-46,000	39,500
Estimator	34,000-44,000	41,000
CAD Technician	24,000-29,500	28,500

SCOTLAND	£ Range	£ Typical
Director	52,000-67,000	62,000
Senior Contracts Manager	42,000-52,000	50,000
Contract Quantity Surveyor	39,000-49,000	47,000
Project Manager	34,000-49,000	48,000
Project Engineer	32,000-44,000	43,000
Estimator	36,000-45,000	44,000
CAD Technician	23,000-27,000	26,000

SOCIAL HOUSING

LONDON	£ Range	£ Typical
Area Housing Manager	45,000-52,000	49,000
Housing Manager	38,000-42,000	41,000
Senior Housing Officer	35,000-39,000	37,000
Housing Officer	30,000-35,000	33,000
Housing Assistant	23,000-25,000	24,000
Resident Involvement Manager	39,000-42,000	40,000
Anti-Social Behaviour/ Community Safety Officer	32,000-36,000	34,000
Income Recovery Officer	29,000-33,000	32,000
Team Manager Supported Housing	31,000-35,000	34,000
Support/Project Worker	22,000-25,000	24,000
Scheme Manager	22,000-25,000	23,500

SOUTH EAST ENGLAND	£ Range	£ Typical
Area Housing Manager	38,000-48,000	42,000
Housing Manager	32,000-39,000	39,000
Senior Housing Officer	28,000-36,000	31,000
Housing Officer	24,000-32,000	27,750
Housing Assistant	18,000-21,000	20,000
Resident Involvement Manager	32,000-39,000	37,500
Anti-Social Behaviour/ Community Safety Officer	25,000-29,000	28,500
Income Recovery Officer	25,000-33,000	31,500
Team Manager Supported Housing	27,000-33,000	32,000
Support/Project Worker	16,500-20,000	17,500
Scheme Manager	16,500-25,000	23,250

EAST OF ENGLAND	£ Range	£ Typical
Area Housing Manager	35,000-47,000	40,000
Housing Manager	35,000-43,000	38,500
Senior Housing Officer	30,000-35,000	33,000
Housing Officer	26,000-33,000	28,000
Housing Assistant	18,000-24,000	20,500
Resident Involvement Manager	30,000-40,000	37,000
Anti-Social Behaviour/ Community Safety Officer	25,000-30,000	27,000
Income Recovery Officer	25,000-30,000	27,500
Team Manager Supported Housing	28,000-34,000	33,000
Support/Project Worker	19,000-24,000	21,000
Scheme Manager	22,000-26,000	24,000

SOUTH WEST ENGLAND	£ Range	£ Typical
Area Housing Manager	41,000-47,000	44,000
Housing Manager	37,000-41,000	39,000
Senior Housing Officer	30,000-33,000	33,000
Housing Officer	27,000-31,000	30,000
Housing Assistant	19,500-24,000	20,000
Resident Involvement Manager	26,000-35,000	29,000
Anti-Social Behaviour/ Community Safety Officer	29,000-33,000	30,000
Income Recovery Officer	29,000-34,000	31,000
Team Manager Supported Housing	28,000-30,000	30,000
Support/Project Worker	22,000-23,000	22,500
Scheme Manager	23,000-26,000	23,500

WALES	£ Range	£ Typical
Area Housing Manager	41,000-47,000	44,000
Housing Manager	37,000-41,000	39,000
Senior Housing Officer	30,000-33,000	33,000
Housing Officer	27,000-31,000	30,000
Housing Assistant	19,500-24,000	20,000
Resident Involvement Manager	26,000-35,000	29,000
Anti-Social Behaviour/ Community Safety Officer	28,500-33,000	29,000
Income Recovery Officer	29,000-34,000	31,000
Team Manager Supported Housing	28,000-30,000	30,000
Support/Project Worker	21,000-23,000	21,500
Scheme Manager	23,000-26,000	23,500

WEST MIDLANDS	£ Range	£ Typical
Area Housing Manager	37,000-45,000	40,000
Housing Manager	33,000-40,000	36,500
Senior Housing Officer	28,000-32,000	30,000
Housing Officer	26,000-29,000	27,500
Housing Assistant	20,000-23,000	22,000
Resident Involvement Manager	29,000-36,000	32,500
Anti-Social Behaviour/ Community Safety Officer	25,000-29,000	27,000
Income Recovery Officer	25,000-30,000	27,500
Team Manager Supported Housing	28,000-32,000	30,000
Support/Project Worker	19,000-22,000	20,500
Scheme Manager	23,000-27,000	25,000

EAST MIDLANDS	£ Range	£ Typical
Area Housing Manager	34,000-42,000	41,000
Housing Manager	30,000-45,000	38,000
Senior Housing Officer	26,000-33,000	32,000
Housing Officer	24,000-30,000	28,500
Housing Assistant	19,000-22,000	20,000
Resident Involvement Manager	29,000-36,000	31,500
Anti-Social Behaviour/ Community Safety Officer	23,000-29,000	28,500
Income Recovery Officer	26,000-36,000	31,000
Team Manager Supported Housing	26,000-32,000	29,500
Support/Project Worker	19,000-21,500	20,000
Scheme Manager	20,000-26,000	22,500

YORKSHIRE AND THE HUMBER	£ Range	£ Typical
Area Housing Manager	27,000-40,000	35,500
Housing Manager	28,000-36,000	34,000
Senior Housing Officer	27,500-32,000	31,000
Housing Officer	22,000-27,500	25,500
Housing Assistant	17,500-20,500	20,000
Resident Involvement Manager	28,500-34,000	31,500
Anti-Social Behaviour/ Community Safety Officer	24,000-31,000	28,000
Income Recovery Officer	22,500-30,500	30,000
Team Manager Supported Housing	27,000-34,500	34,000
Support/Project Worker	16,000-23,000	22,500
Scheme Manager	16,000-20,000	19,000

NORTH EAST ENGLAND	£ Range	£ Typical
Area Housing Manager	35,000-50,000	40,000
Housing Manager	32,000-37,000	35,500
Senior Housing Officer	26,000-31,000	29,000
Housing Officer	24,000-29,000	27,000
Housing Assistant	18,000-23,000	21,000
Resident Involvement Manager	29,000-36,000	33,500
Anti-Social Behaviour/ Community Safety Officer	26,000-32,000	29,000
Income Recovery Officer	23,000-31,000	28,500
Team Manager Supported Housing	25,000-34,000	33,000
Support/Project Worker	17,500-22,500	22,000
Scheme Manager	17,500-23,500	21,500

NORTH WEST ENGLAND	£ Range	£ Typical
Area Housing Manager	35,000-50,000	41,000
Housing Manager	34,000-42,000	38,000
Senior Housing Officer	30,000-35,000	32,000
Housing Officer	24,000-33,000	29,000
Housing Assistant	19,000-24,000	22,000
Resident Involvement Manager	28,000-35,000	33,000
Anti-Social Behaviour/ Community Safety Officer	28,000-36,000	30,000
Income Recovery Officer	24,000-32,000	28,000
Team Manager Supported Housing	28,000-37,000	33,000
Support/Project Worker	19,000-26,000	22,000
Scheme Manager	20,000-25,000	22,000

NORTHERN IRELAND	£ Range	£ Typical
Area Housing Manager	39,000-44,000	40,000
Housing Manager	36,500-42,000	39,000
Senior Housing Officer	31,500-37,500	32,000
Housing Officer	25,000-31,000	27,000
Housing Assistant	18,000-22,000	19,000
Resident Involvement Manager	20,000-23,000	21,000
Anti-Social Behaviour/ Community Safety Officer	20,000-23,000	20,500
Income Recovery Officer	20,000-25,000	22,000
Team Manager Supported Housing	31,000-36,000	32,500
Support/Project Worker	19,000-23,000	21,000
Scheme Manager	21,000-25,000	22,500

SCOTLAND	£ Range	£ Typical
Area Housing Manager	40,000-52,000	43,500
Housing Manager	37,000-47,000	40,500
Senior Housing Officer	29,500-39,000	33,500
Housing Officer	25,000-35,000	31,500
Housing Assistant	19,500-26,000	25,000
Resident Involvement Manager	29,500-35,000	32,500
Anti-Social Behaviour/ Community Safety Officer	24,000-32,000	29,500
Income Recovery Officer	26,000-31,000	29,500
Team Manager Supported Housing	27,000-32,000	29,500
Support/Project Worker	17,000-22,000	19,500
Scheme Manager	19,500-22,500	20,250