

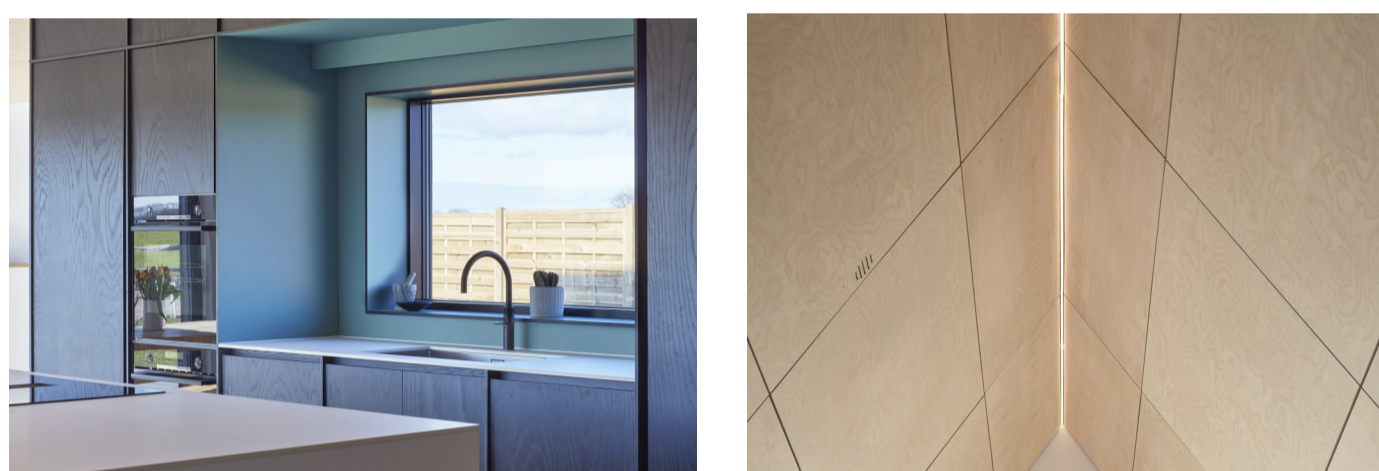
Our clients undertook this project as an ambitious self-build, motivated by the lack of architecturally interesting properties available on the market.

PIP designed a stunning contemporary take on the local agricultural vernacular which fits pleasingly into its rural surroundings. The completed home consists of a two-storey barn clad in corrugated metal with simple aluminum framed openings and striking Corten features, linked to a steeply vaulted, timber clad open plan kitchen-living-dining space.

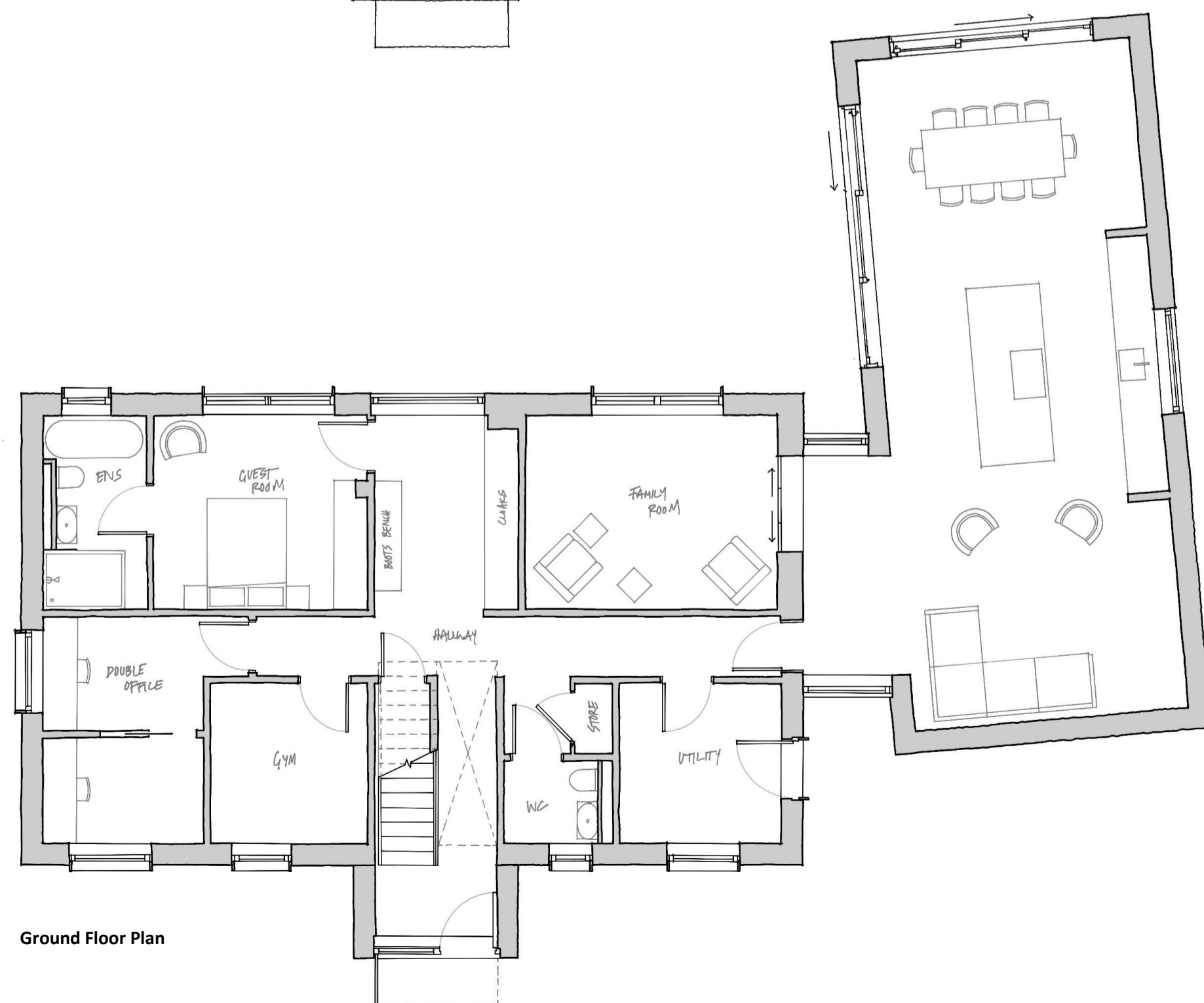
Plot 9 was a 0.4-acre plot on the site of an old farm which formed part of a Self-Build Plot Development with Outline Planning Permission for nine dwellings. It is located on the western edge of the Cambridgeshire village of Caxton, surrounded by open farmland and countryside.

The minimalist aesthetic and strong material palette that PIP delivered perfectly translates the clients' detailed brief and required meticulous attention to detail to achieve such a clean, high-quality finish. PIP provided detailed technical drawings and were actively on-hand throughout the project with creative solutions to hide the complexities of the build behind a deceptively simple façade, such as concealed lighting, bespoke ventilation system and slim-framed, large glazed openings.





First Floor Plan



Ground Floor Plan