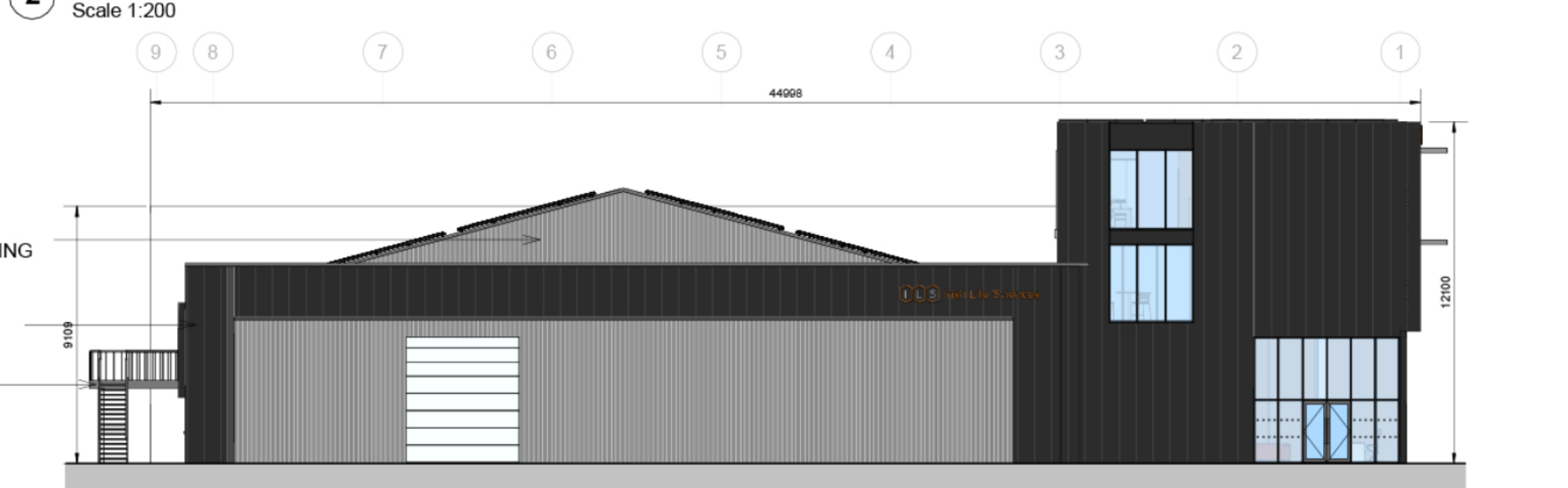


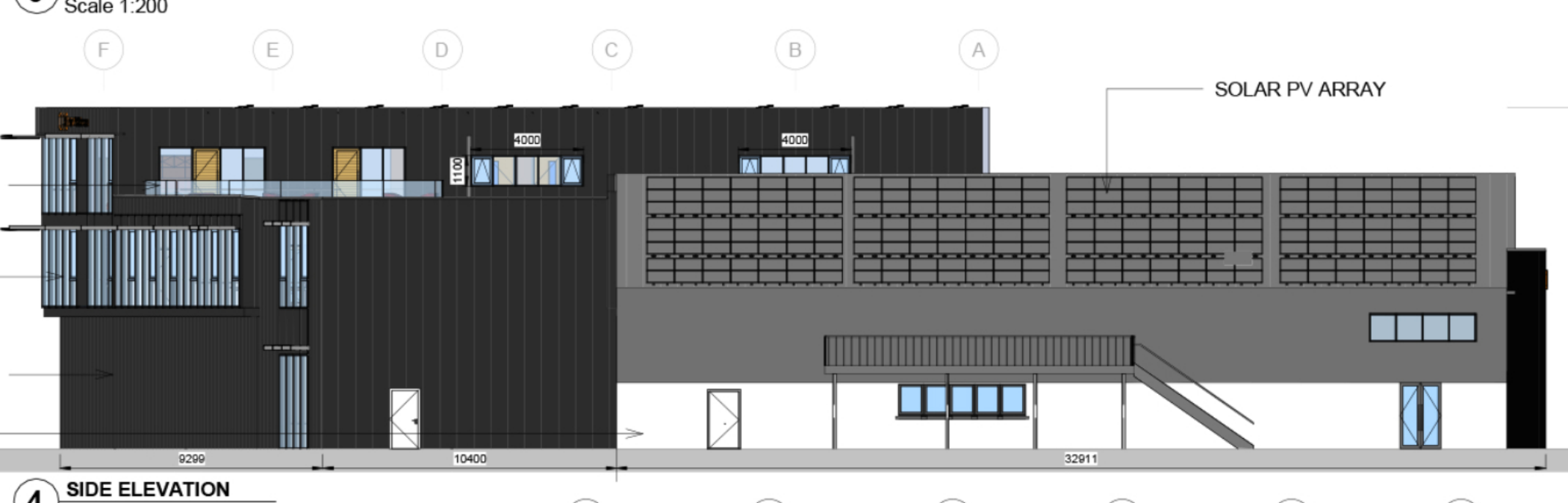
IRISH LIFE SCIENCE BRANDING  
BRISE SOLEIL INCORPORATED INTO CURTAIN WALLING SYSTEM  
42MM TRIPLE GLAZED CURTAIN WALLING SYSTEM  
METALLIC FACED 100MM KINGSPAN CLADDING



GREY METALLIC FACED 100MM KINGSPAN CLADDING  
METALLIC FACED 100MM KINGSPAN CLADDING  
EXTERNAL RAISED PLANT AREA



1100MM GLAZED GUARDING TO TERRACE  
42MM TRIPLE GLAZED CURTAIN WALLING SYSTEM  
METALLIC FACED 100MM KINGSPAN CLADDING  
EXISTING RENDERED WALL TO BE RETAINED



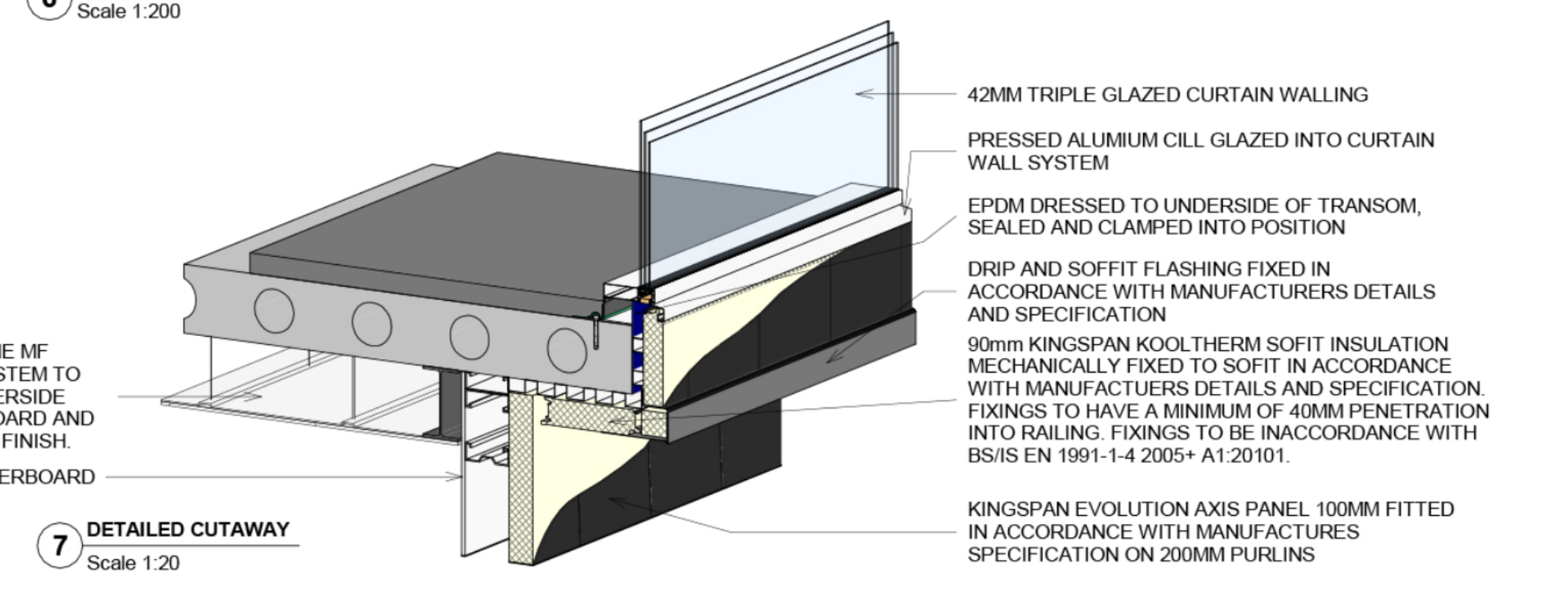
EXISTING STAND AND SEAM METAL ROOF  
NEW PHOTOVOLTAIC PANEL ARRAY  
METALLIC FACED 100MM KINGSPAN CLADDING



Metal Deck  
150mm Xtratherm PIR flat Roof Insulation  
Fatra Reinforced Single Ply flat roof membrane finish.  
Roof lights - U-value 1.1Wm<sup>2</sup>/K



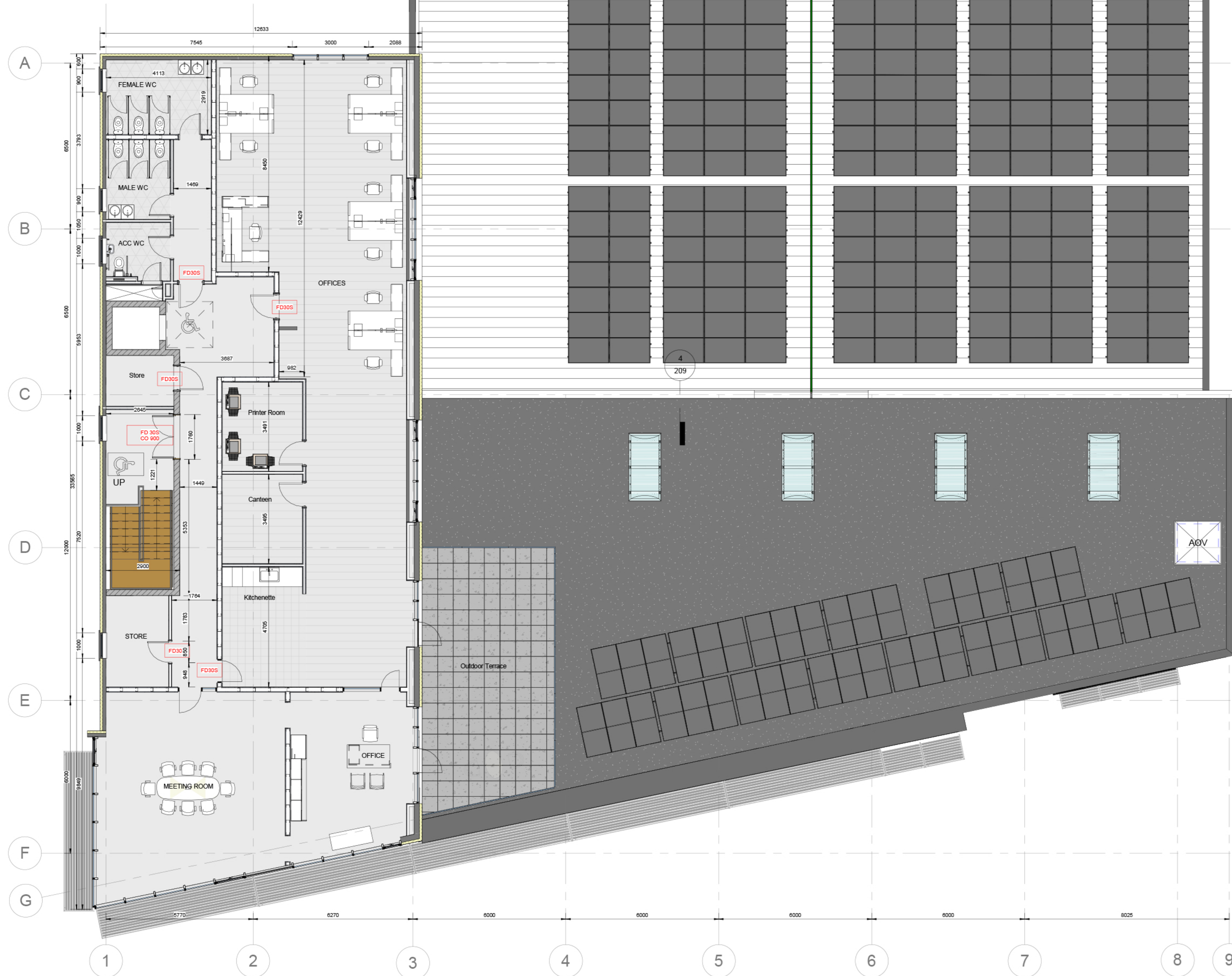
GROUND FLOOR  
Reinforced Radon Barrier  
120mm Kingspan PIR Insulation  
200mm 35n Concrete with steel reinforcement  
150MM GYPROC CASOLINE MF SUSPENDED CEILING SYSTEM TO SUPPLIER SPEC TO UNDERSIDE WITH 12.5MM PLASTERBOARD AND 3MM GYPSUM SKIMCOAT FINISH.  
12.5MM INTERNAL PLASTERBOARD



Irish Life Sciences Global HQ



SECOND FLOOR PLAN  
Scale 1:100



FATRA FF87 100X100 15 MM FASCIA DRIP TRIM

FATRA FF810 MEMBRANE TAKE OVER PARAPET, INSTALLED IN LINE WITH MANUFACTURES GUIDELINES. LAID TO FALL BACK ONTO MAIN ROOF. FATRA EXTERNAL TRIM

150mm TR26 KINGSPAN FLAT ROOF INSULATION WITH VAPOUR TIGHT ALUMINIUM FOIL FACING MECHANICALLY FIXED ON VAPOUR CONTROL LAYER (TO SUPPLIERS SPECIFICATION) ON METAL DECKING ( TO STRUCTURAL ENGINEERS SPECIFICATION)

FATRA FF810 MEMBRANE, SIDE LAPPED FIXED VERTICALLY AT 150MM CENTRES. FOR PARAPETS UP TO 600MM, WELD MEMBRANE TO TRIMS

FATRA FP882 GALVANISED BAR

FLAT ROOF MEMBRANE TO SUPPLIER SPEC: FATRA SINGLE PLY MEMBRANE FLAT ROOF. INSTALLED BY APPROVED INSTALLER ONLY AND WARRENTY TO BE CERTIFIED. PROVISIONALLY ALLOW FOR FATRAFOL REINFORCED ROOFING MEMBRANE ON 150mm TR27 KINGSPAN FLAT ROOF INSULATION WITH VAPOUR TIGHT ALUMINIUM FOIL FACING ON VAPOUR CONTROL LAYER (TO SUPPLIERS SPECIFICATION) ON METAL DECKING ( TO STRUCTURAL ENGINEERS SPECIFICATION) ON 200MM PURLINS FIXED TO PRIMARY STEEL STRUCTURE IN ACCORDANCE WITH STR. ENGINEERS DETAILS AND SPECIFICATION

PRO CLIMA INTELLO PLUS AIRTIGHTNESS MEMBRANE OR SIMILAR APPROVED TO UNDERSIDE OF ROOF PURLINS

12.5MM PLASTERBOARD TO UNDERSIDE OF PURLINS

2 CURTAIN WALL PARAPET CAPPING DETAIL  
Scale 1:10

SIGA 'MAJPELL' AIR TIGHT MEMBRANE SEAL AT JUNCTION OF DOOR AND FLOOR. CONFIRMATION OF DETAIL WITH SIGA AND APPROVED AIR TIGHTNESS CONTRACTOR.

SELECTED CARPET TILE FINISH ADHERED TO SUB FLOOR

DOOR FIXED TO HOLLOWCORE FLOOR, FINAL DETAIL TO BE CONFIRMED BETWEEN SLIDING DOOR MANUFACTURER AND STRUCTURAL ENGINEER PRIOR TO CONSTRUCTION.

3 THRESHOLD DETAIL ONTO BALCONY  
Scale 1:10

EXISTING STAND AND SEAM METAL ROOF MAINTAINED AND REPAIRED WHERE NEEDED

NEW PHOTOVOLTAIC PANEL ARRAY INSTALLED ON EXISTING ROOF ON WAREHOUSE

EXTERNAL DRIP AND SOFFIT TRIM WITH SEALED BUTT STRAPS

ALUMINIUM SECRET GUTTER FORMED ON UNDERSIDE OF EXISTING METAL ROOF. FIXED TO METAL DECKING, TO BE DRAINED TO BUILDING SIDE

150MM GYPROC CASOLINE MF SUSPENDED CEILING SYSTEM TO SUPPLIER SPEC TO UNDERSIDE WITH 12.5MM PLASTERBOARD AND 3MM GYPSUM SKIMCOAT FINISH.

EXISTING PORTAL FRAME RETAINED

4 EXISTING ROOF JUNCTION WITH NEW WALL  
Scale 1:10

